

SIZE RANGE
WORKING PRESSURE
SUGGESTED SPECIFICATIONS

M&H VALVE

**PRESSURE RELIEF VALVES---“FLOOR TYPE”
STYLE F-1493**

Body Length- Inches	4” x 8”	6” x 8”
Weight Complete - Pounds	30	42

WORKING PRESSURE
The valve starts to open at a head of approximately 9” of water.

SUGGESTED SPECIFICATIONS:

Floor type hydrostatic pressure relief valve shall be designed for installing in the bottom of concrete tanks.

The assembly shall consist of three parts: cover, body and grate. All three parts shall be of cast iron conforming to ASTM specifications A-126 Class B. They shall be designed so that neither the cover nor grate can become separated from the body of the valve, due to ground water pressure around the tank. However, when necessary, both may be easily removed by turning them to right or left to free them from locking lugs cast integrally on the inside of the body.

The seats shall be of BUNA-N rubber, bonded to the cover, mating with a machined bronze seat in the body.

Floor type pressure relief valves shall be as furnished by M&H Valve (Style F-1493) or approved equal.

INSTALLATION

OPERATION

MAINTENANCE

M&H VALVE

PRESSURE RELIEF VALVES---“FLOOR TYPE”

STYLE F-1493

General

Inspect all assemblies at time of delivery for shipping damage and to confirm compliance with order. The valve should be protected from rough handling. Water and debris should not be allowed to collect in valve.

I. Installation

- A. Check that valve end joints are clean
- B. Remove any material used to restrain the gate during shipment and storage.
- C. The cover should be checked to insure freedom of motion and proper operation.
- D. The valve should be installed over a bed of crushed stone.
- E. The valve must be installed in the vertical position to operate properly.

II. Operations

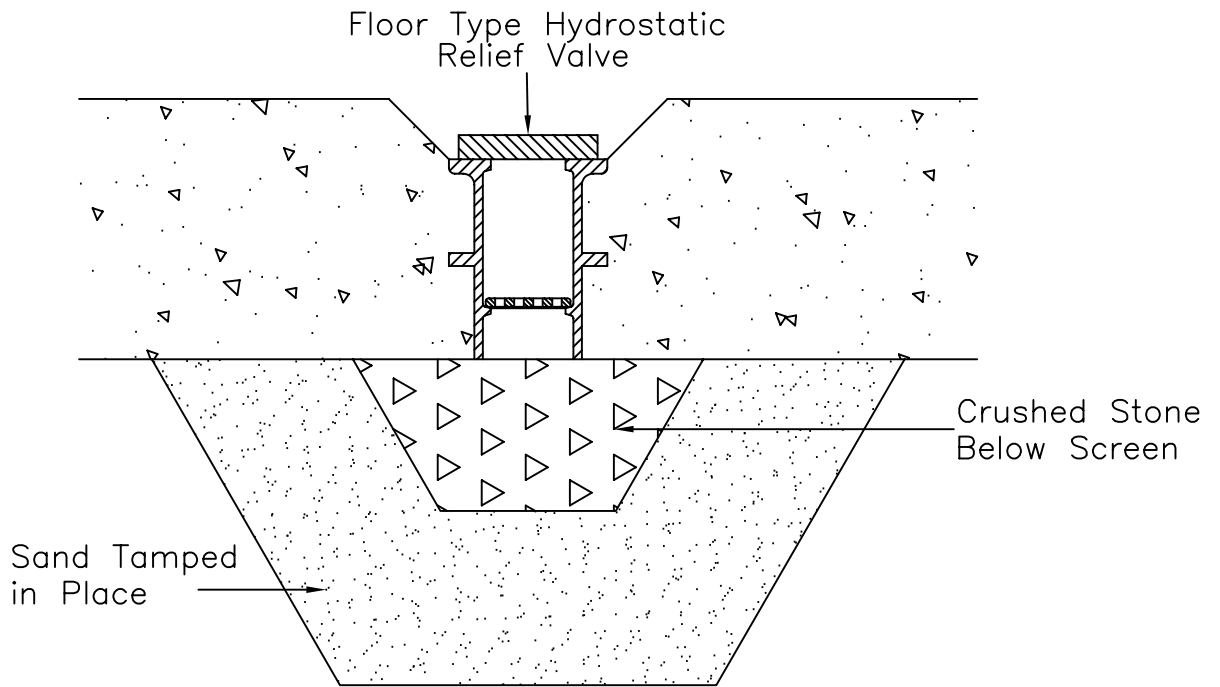
Once installed, the valve will operate as pressure conditions dictate. When outside water pressure builds up. Exceeding the inside pressure, the valve will open and allow water to enter the tank to equalize pressure. When the pressure is relieved, the valve will close to prevent seepage of liquid out into the ground.

III. Maintenance

Frequency of inspection should be at least on an annual basis, or whenever valve is accessible. Remove the cover by turning it right or left and lifting out. Examine and clean seating surfaces. Remove any debris from inside of body. Remove and clean grate if necessary. Reassemble and insure proper operation and retention of cover.

Note:

There are no recommended spare parts
There are no lubrication requirements.



- NOTE 1: A rubber (Buna-N) To metal seal is accomplished when the cover is in the closed position, metal face is a machined bronze seat.
- NOTE 2: Ground water pressure cannot separate cover or grate from body.
- NOTE 3: Cover and grate can be removed by turning to right or left and lifting out.
- NOTE 4: Valve starts to open at a head of approximately 9" of water
- NOTE 5: In order for the F-1493 "Floor Type Valve" to operate correctly, it must be installed in a vertical position.
- NOTE 6: The 8" long cast iron body is designed to be extended to any length by using C900 PVC pipe and field cutting to desired length.

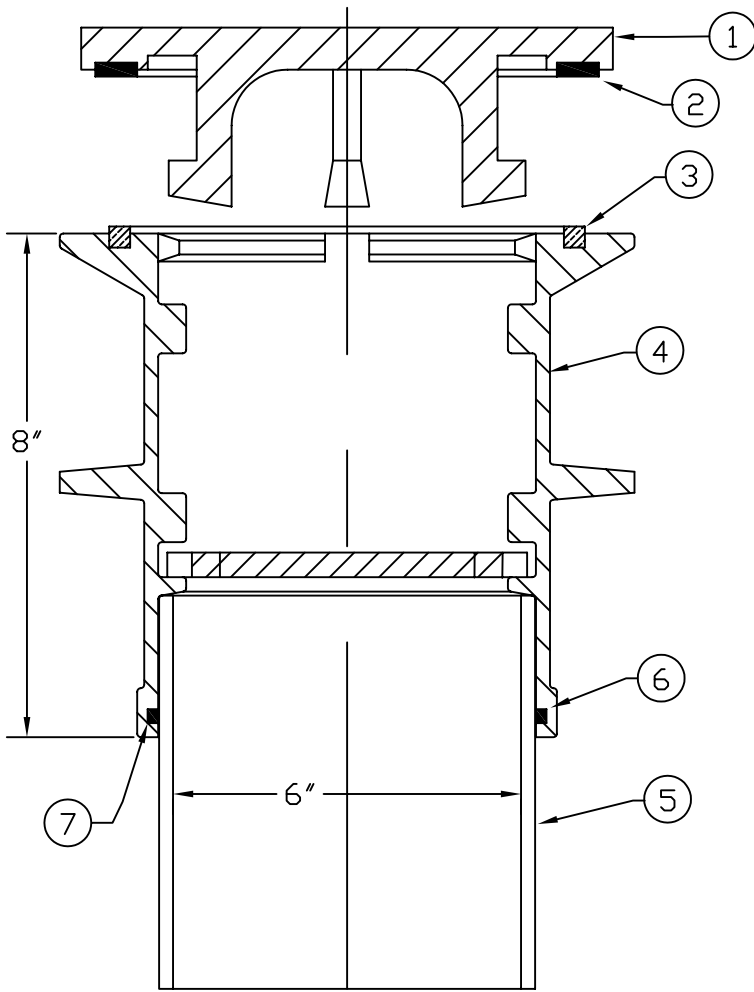
M&H VALVE COMPANY
ANNISTON, ALABAMA
A DIVISION OF MCWANE INC.

DWN: TRIJ

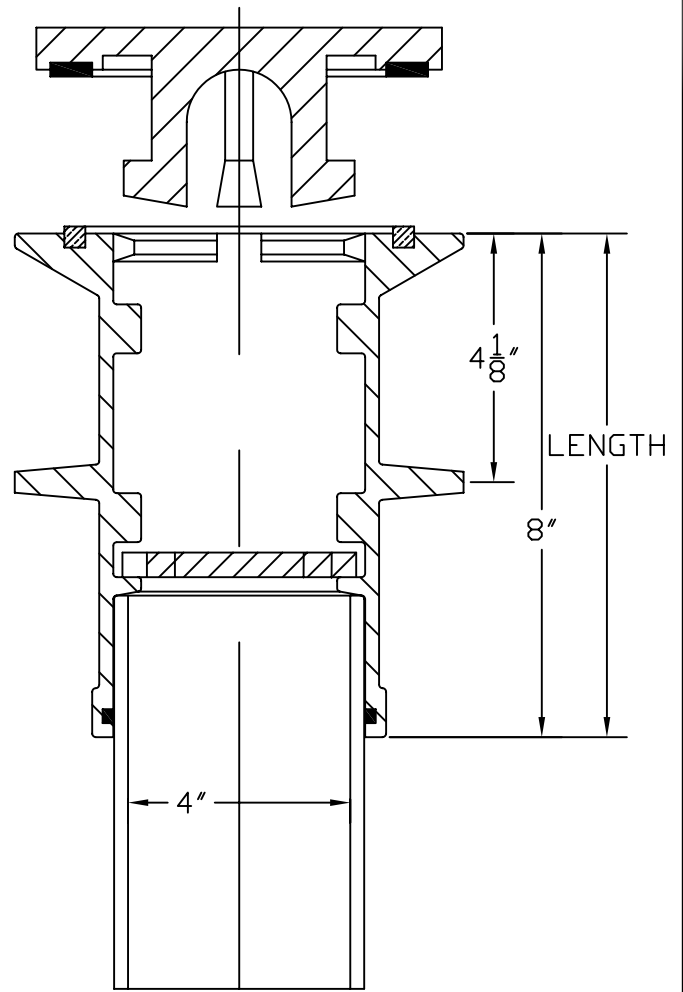
DATE: 7/1/05

DWG. NO.
PRV-F

4" PRESSURE RELIEF VALVES
(FLOOR TYPE)
INSTALLATION DETAIL / NOTES
STYLE F-1493



6" SIZE--Weight 42LBS.



4" SIZE--Weight 30LBS.

ITEM	DESCRIPTION	MATERIAL	
1	COVER	CAST IRON	A126B
2	SEAL	BUNA-N	50 DUR
3	SEAT	BRONZE	SAE660
4	BODY	CAST IRON	A126B
5	EXTENSION	P.V.C.	C900
6	O RING	BUNA-N	60 DUR
7	GRATE	CAST IRON	A126B

NOTE:

#5. P.V.C PIPE IS NOT SUPPLIED ON 8" LENGTH

#3. BRONZE SEAT IS PRESSED & SEALED INTO GROOVE

#7. GRATE SHOWN 45° OUT OF POSITION, SLOTS LINE UP W/RIBS TO ASSEMBLE ONLY

M&H VALVE COMPANY
ANNISTON, ALABAMA
A DIVISION OF MCWANE INC.

DWN: TRIJ

DATE: 7/1/05

DWG. NO.
PRV-F

4" & 6" PRESSURE RELIEF VALVES
(FLOOR TYPE)

MATERIAL LIST / DIMENSIONS / WEIGHTS
STYLE F-1493

SIZE RANGE / WEIGHT

PRESSURE RATING

ACCESSORIES / OPTIONS

SUGGESTED SPECIFICATIONS

M&H VALVE—PRESSURE RELIEF VALVE---WALL TYPE STYLE F-1494-T

<u>Available End Connections</u>	<u>Size Range</u>	<u>Aprox. Weight</u>	<u>Size Style No.</u>
Flanged End	4" x 12"	35 lbs.	F-1494-T
Flanged End	6" x 12"	47 lbs.	F-1494-T

Working Pressure

Valves unseat and swing open under unseating pressure to release the outfall fluid and close when pressure is relieved.

Accessories / Options:

4" & 6" F-1496-T Wall Pipe with Grate

SUGGESTED SPECIFICATIONS:

The wall type hydrostatic pressure relief valve shall be suitable for sidewall installation in tanks and digesters.

The valve shall be of the 1.0degree seat design with offset single pivoted hinge.

The flap gate and body shall be of cast iron conforming to ASTM specifications A-126 Class B.

The body seat ring and hinge pin shall be furnished of bronze.

The gate shall have a neoprene rubber seat cemented and mechanically retained in place by a retainer plate. The body seat ring shall be threaded and screwed into place and the face machined to a smooth finish.

The valve shall have a 4" or 6" flanged end faced and drilled to ANSI 125 pound template for connection to a 4" or 6" wall pipe.

Wall type pressure relief valves shall be furnished by M&H or approved equal.

NOTE:

The 12" long cast iron wall thimble is designed to be extended to any length by using C900 PVC pipe and field cut to desired length.

July 2005 / M&H Pressure Relief Valves—Wall Type

INSTALLATION

OPERATION

MAINTENANCE

M&H VALVE

PRESSURE RELIEF VALVE---WALL TYPE

STYLE F-1494-T

General

Inspect all assemblies at time of delivery for shipping damage and to confirm compliance with order. The valve should be protected from rough handling. Water and debris should not be allowed to collect in valve.

I. Installation

- A. Check that valve end joints are clean
- B. Remove any material used to restrain the gate during shipment and storage.
- C. The gate should be checked to insure freedom of motion and proper operation
- D. When handling the valve, do not use the outside mechanism for lifting.
- E. Prepare mounting flange of wall thimble that has been cast into wall tank, as required. Install the valve as per appropriate instructions for the specified joint. Bolts holes should straddle the vertical centerline.

II. Operations

Once installed, the valve will operate as pressure conditions dictate. When outside water pressure builds up, exceeding the inside pressure, the valve will open and allow water to enter the tank to equalize pressure. When the pressure is relieved, the valve will close to prevent seepage of liquid out into the ground.

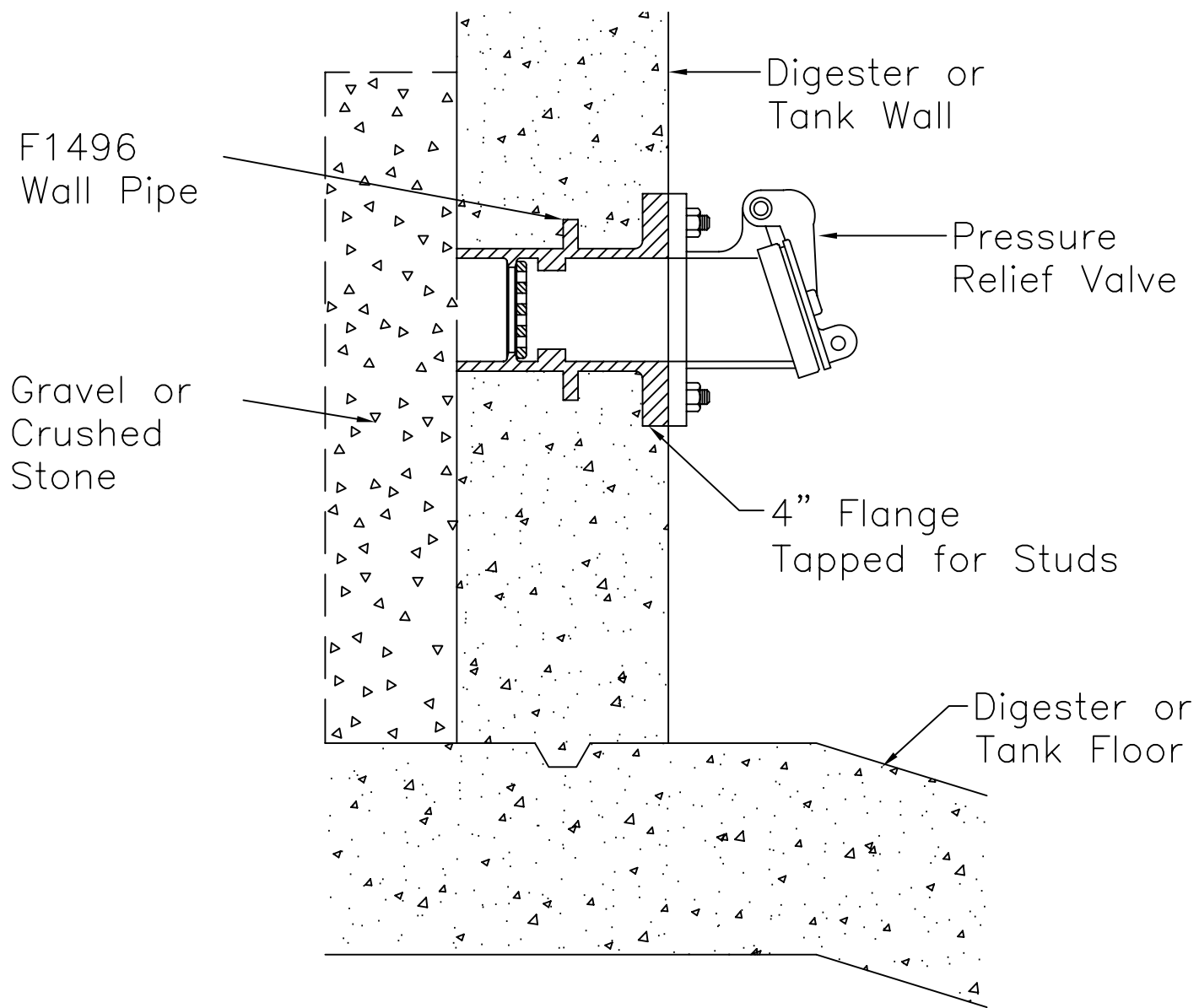
III. Maintenance

Frequency of inspection should be at least on an annual basis, or whenever valve is accessible. Joint should be visually inspected for leakage. Raise and lower the flap so pin can be checked for free operation. Exercise and lubricate the hinge/shaft pin (* with suitable lubricant) at least annually to assure free operation. Check rubber flap ring and seat ring for freedom from damage. Remove any debris found on inside of valve.

Notes:

There are no recommended spare parts

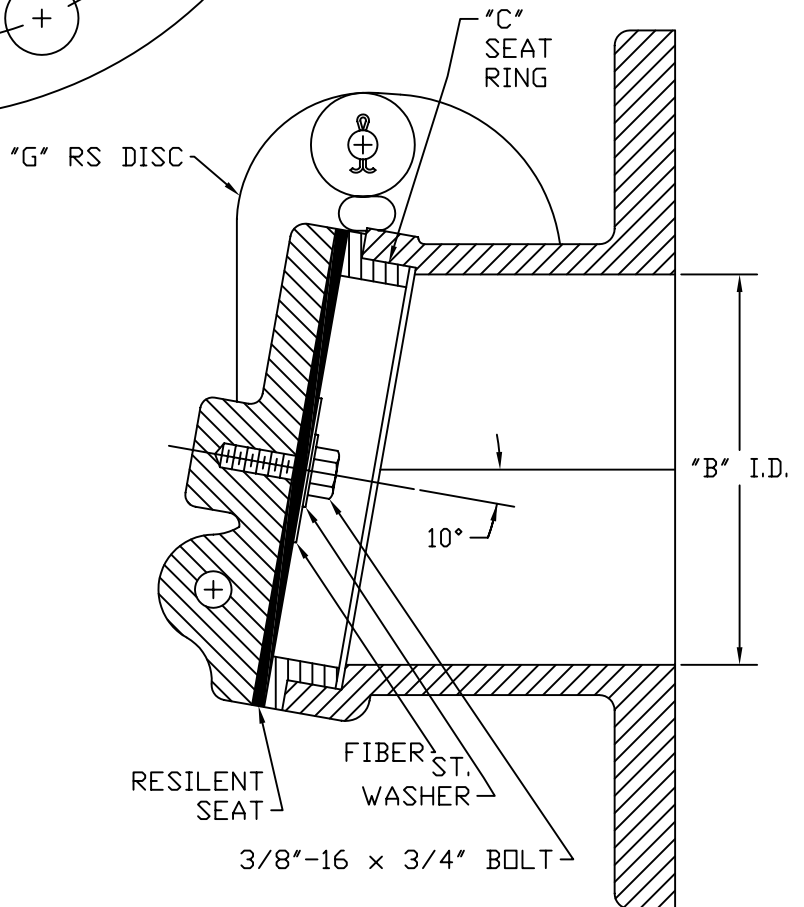
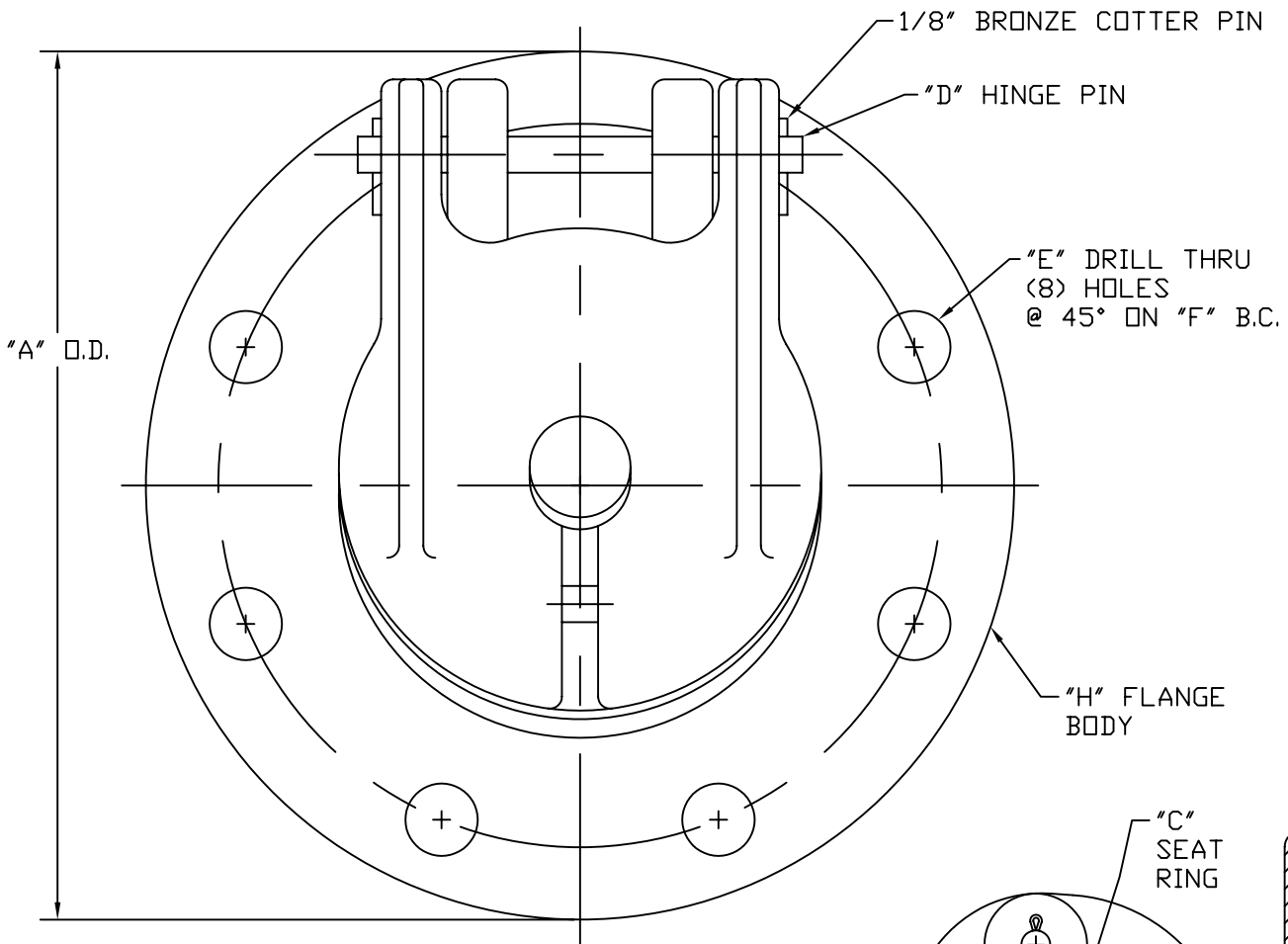
Recommend food grade grease similar to Chevron FM Grease EP NLGI 2.



M&H VALVE COMPANY
 ANNISTON, ALABAMA
 A DIVISION OF MCWANE INC.

DWN: TRIJ
 DATE: 7/1/05
 DWG. NO.
 PRV-W3

4" & 6" PRESSURE RELIEF VALVE
 (WALL TYPE)
 INSTALLATION DETAIL
 STYLE F-1494-T

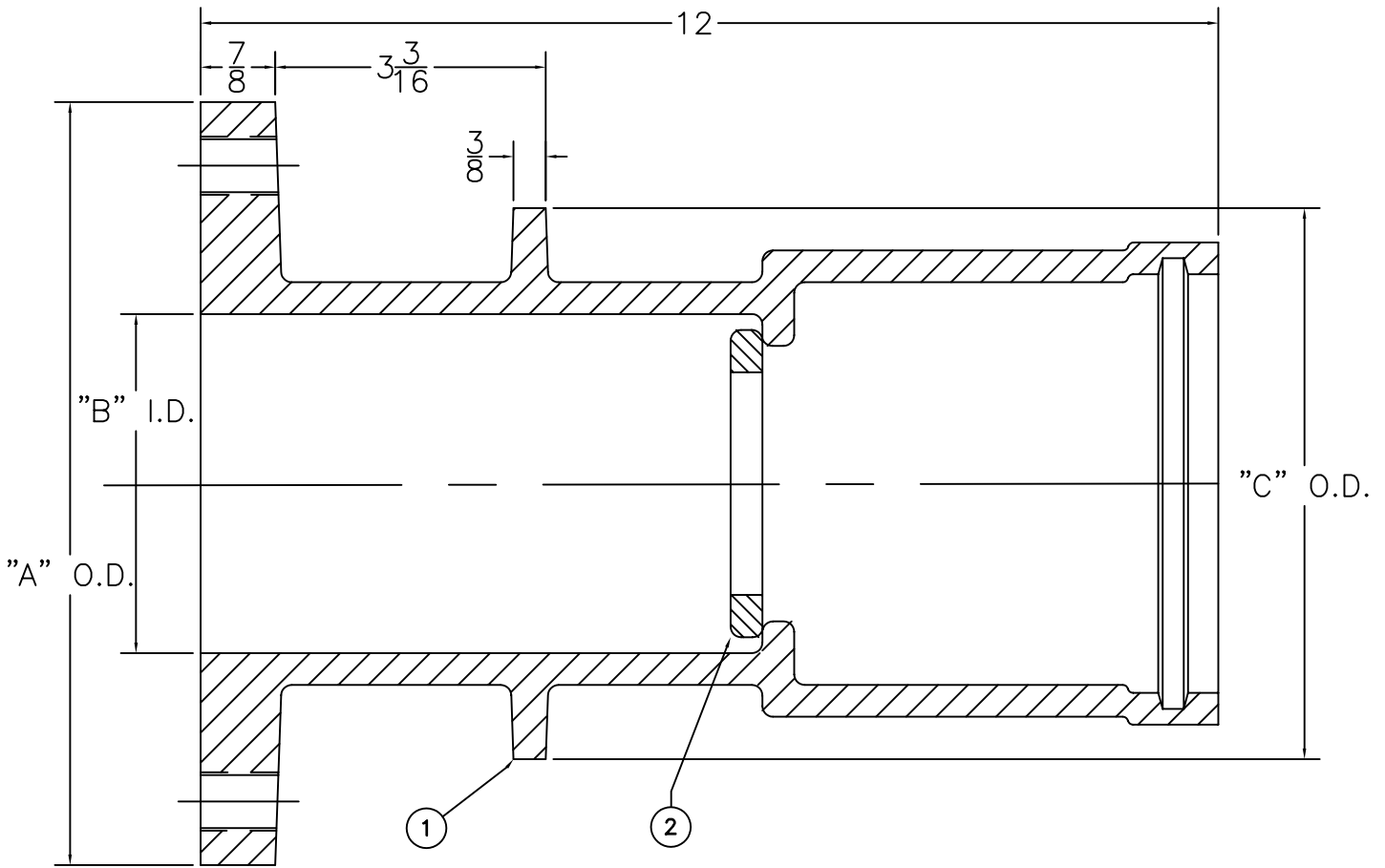


DIMENSIONS & PART NO.'s		
SIZE	4"	6"
A	9	11
B	4	6
C	155575	155577
D	177400	177426
E	3/4	7/8
F	7 1/2	9 1/2
G	177401	177412
H	177402	177409

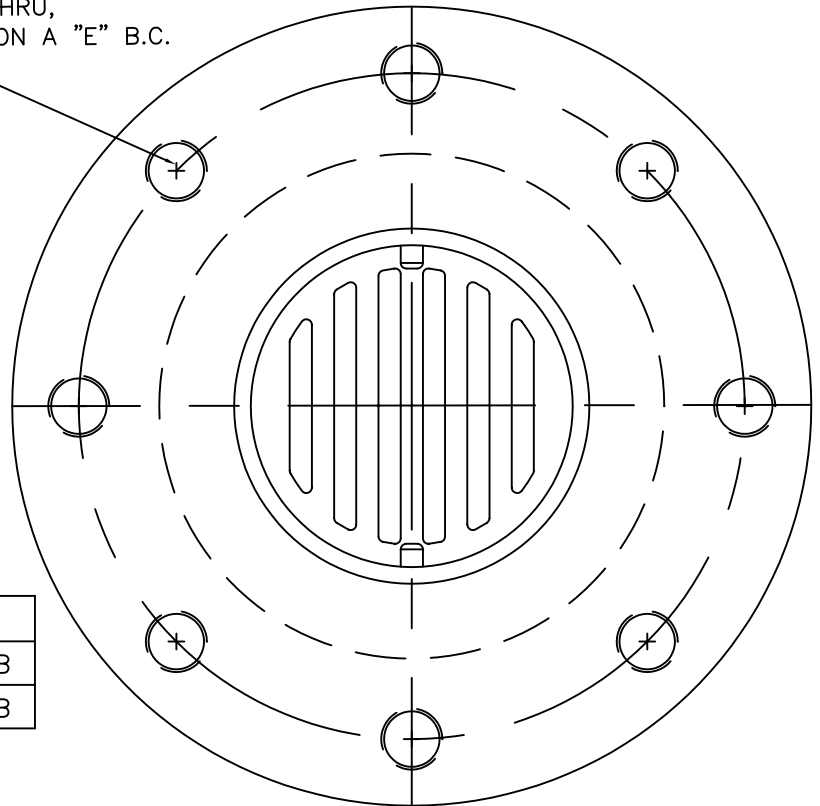
M&H VALVE COMPANY
ANNISTON, ALABAMA
A DIVISION OF MCWANE INC.

DWN: TRIJ
DATE: 7/1/05
DWG. NO.
PRV-W1

4" & 6" PRESSURE RELIEF VALVE
(WALL TYPE)
ASSEMBLY / MATERIAL LIST / DIMENSIONS
STYLE F-1494-T



"D" TAP THRU,
LOCATED ON A "E" B.C.
(8) REQ'D



DIMENSIONS		
SIZE	4"	6"
A	9.00	11.00
B	4.00	6.00
C	6.50	8.50
D	$\frac{5}{8}$ "-11UNC	$\frac{3}{4}$ "-10UNC
E	7.50	9.50

4" Weight 35 lbs.

6" Weight 47 lbs.

ITEM	DESCRIPTION	REQ'D	MATERIAL
1	WALL THIMBLE	1	CAST IRON A126B
2	GRATING	1	CAST IRON A126B

NOTE: CAN BE EXTENDED TO ANY LENGTH BY
USING C900 PVC

M&H VALVE COMPANY
ANNISTON, ALABAMA
A DIVISION OF MCWANE INC.

DWN: TRIJ
DATE: 7/1/05
DWG. NO.
PRV-W2

4" PRESSURE RELIEF VALVE--(WALL TYPE)
WALL THIMBLE
ASSEMBLY / MATERIAL LIST / DIMENSIONS
STYLE F-1494-T