

SIZE RANGE

PRESSURE RATING

ACCESSORIES / OPTIONS

SUGGESTED SPECIFICATIONS

M&H VALVE—SHEAR GATES (4”-30”) STYLE 44-02

SIZE RANGE	WORKING PRESSURE
4”-30”	Recommended for use in lines of low seating pressure only.

Note: Seating pressure is tending to push gate to seat.

<u>Available End Connections</u>	<u>Size Range</u>	<u>Style No.</u>
Flanged End Frame	4”-30”	44-02

Note: Flanged End Frame are faced and drilled to ANSI 125lb. template.

Accessories / Options:

Lifting Handle & Hooks

SUGGESTED SPECIFICATIONS:

Shear gate shall be full opening; circular port, iron body bronze mounted design and furnished with flanged ends.

The body (frame), gate and wedges shall be of cast iron conforming to ASTM specification A-126 Class B.

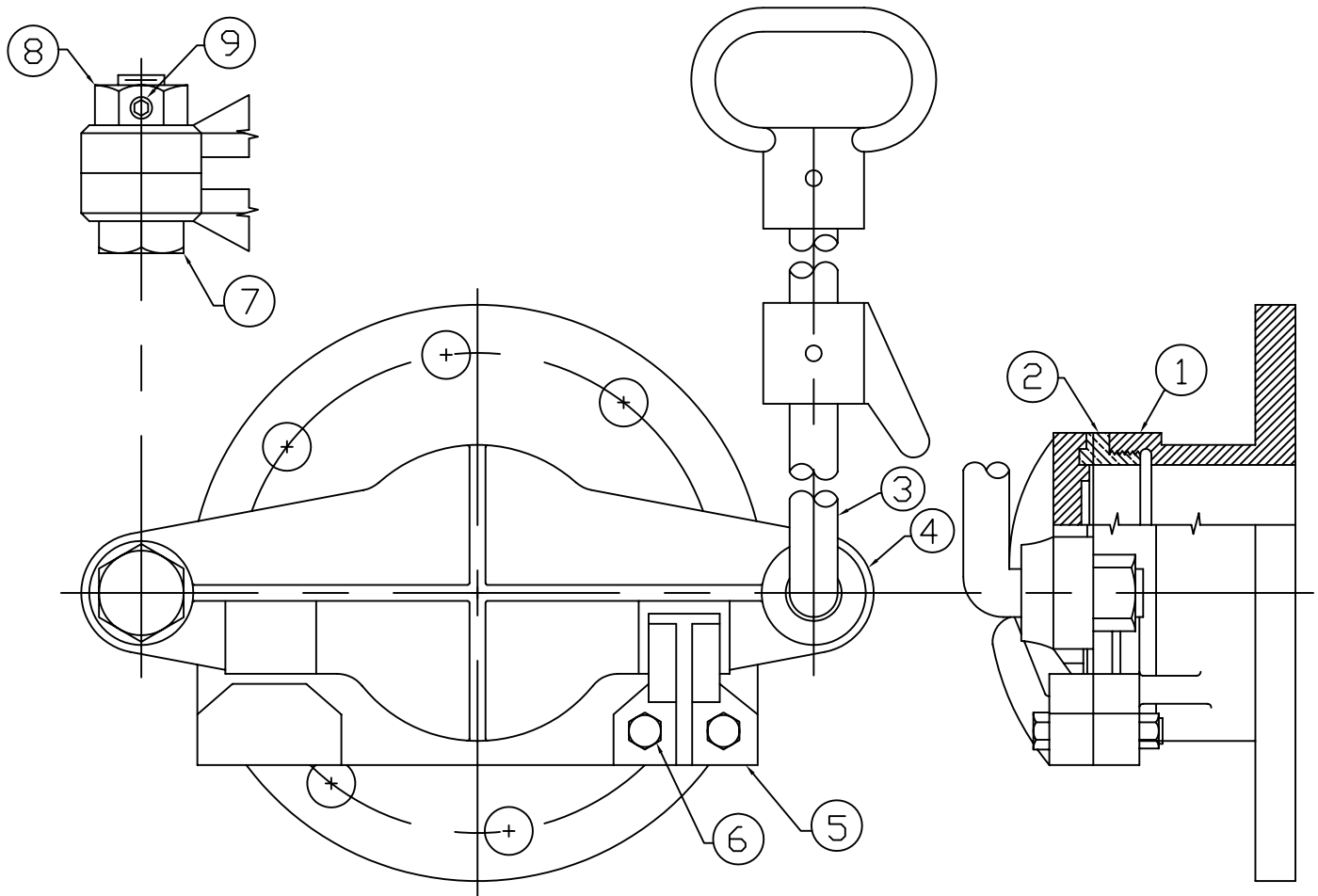
The valve shall be furnished with a wedge bolted to the body so they can easily be removed and replaced due to wear.

The gate shall be sturdily proportioned and pivot on a solid bronze hinge bolt.

The bronze gate (seat ring shall be rolled into a dovetailed groove under pressure to make one inseparable unit. The bronze gate ring face shall be machined to a smooth finish. The body seat ring shall be bronze, threaded and screwed into place and the face machined to a smooth finish.

Lift rods are used to manually raise and lower the Shear Gate disc from a position above the gate. A cast iron catch hook may be adjusted on the lift rod to allow the rod to be hung on a hanger placed in the wall. Lift rod material is 3/4” dia. Carbon steel. Catch and loop handle are cast iron. Lift rods may be made to specified length in 6” increments.

July 2005 / M&H Shear Gates



PARTS LIST					
ITEM	DESCRIPTION	REQ'D	MATERIAL	ASTM	
1	BODY	1	CAST IRON	A126	CL. B
2	SEAT RING	1	BRONZE	B62	
3	LIFT HANDLE DISC W/BR	1	STEEL	A107	GR. 1115
4	DISC RING	1	CAST IRON	A126	CL. B
5	RIGHT HAND WEDGE	1	CAST IRON	A126	CL. B
6	WEDGE BOLT	2	STEEL		ASA B18.2
7	HINGE BOLT	1	BRONZE	B62	
8	HINGE BOLT NUT	1	BRONZE	B62	
9	SET SCREW	1	STEEL		PLATED

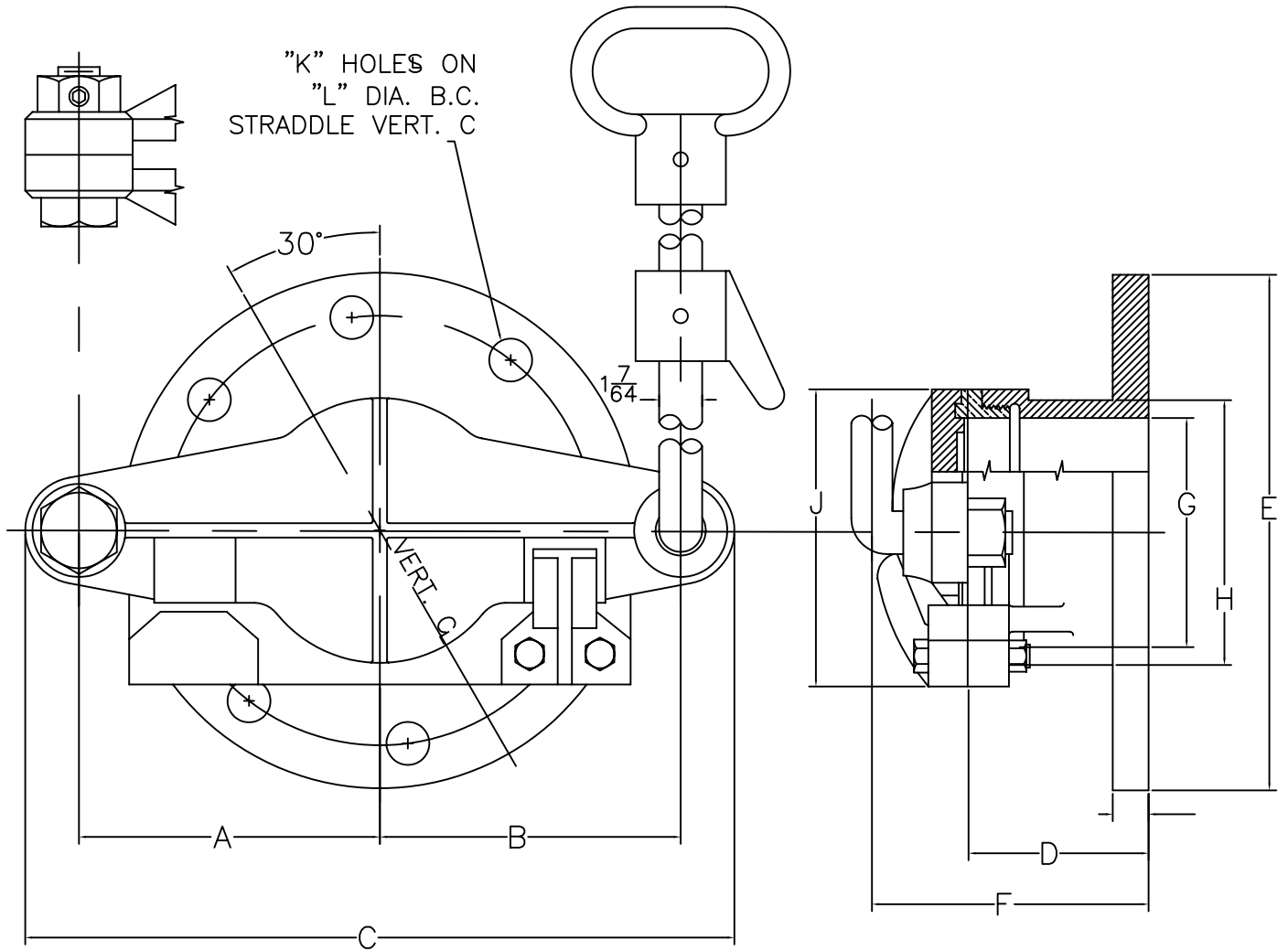
FURNISHED WITH TWO FOOT LIFT HANDLE AND CATCH

LONGER LIFT HANDLE FURNISHED WHEN SPECIFIED

M&H VALVE COMPANY
ANNISTON, ALABAMA
A DIVISION OF MCWANE INC.

DWN: TRIJ
DATE: 7/1/05
DWG. NO.
SGV-A1

4" THRU 30" SHEAR GATES
VALVE ASSEMBLY / MATERIAL LIST
STYLE 44-02
FLANGED END



VALVE SIZE	4	6	8	10	12	14	16	18	20	24	30
A	5 1/4	6 1/2	8	9 3/8	11	13 1/2	14 1/2	15 1/2	18	21	24
B	5 1/4	6 1/2	8	9 3/8	11	13 1/2	14 1/2	15 1/2	18	21	24
C	12 3/8	15 1/8	18 3/8	21 3/8	24 3/4	31	33 1/2	36	41	47	53 1/2
D	3 1/4	3 3/8	3 5/8	4	4 3/8	4 3/4	5 1/2	6	6	6 1/2	6 1/2
E	9	11	13 1/2	16	19	21	23 1/2	25	27 1/2	32	38 3/4
F	5	5 1/4	5 3/8	6	6 5/8	7 1/4	8 9/16	9 3/8	9 1/2	10 1/2	10 3/4
G	4	6	8	10	12	14	16	18	20	24	30
H	4 5/8	6 3/4	8 3/4	10 7/8	13	15 1/4	17 1/4	19 1/4	21 1/2	25 3/4	32
I	5/8	11/16	3/4	13/16	7/8	1	1 1/8	1 1/4	1 1/4	1 3/8	1 1/2
J	5	7	9 1/4	11 1/2	13 1/2	15 3/4	18	20	22 1/4	26 1/4	32 3/4
K	8-3/4	8-7/8	8-7/8	12-1	12-1	12-1 1/8	16-1 1/8	16-1 1/4	20-1 1/4	20-1 3/8	28-1 3/8
L	7 1/2	9 1/2	11 3/4	14 1/4	17	18 3/4	21 1/4	22 3/4	25	29 1/2	36
WEIGHT	37	61	90	138	174	246	320	362	500	672	980

M&H VALVE COMPANY
ANNISTON, ALABAMA
A DIVISION OF MCWANE INC.

DWN: TRIJ
DATE: 7/1/05
DWG. NO.
SGV-A2

4" THRU 30" SHEAR GATES
GENERAL DIMENSIONS
STYLE 44-02
FLANGED END

INSTALLATION
OPERATION
MAINTENANCE

M&H VALVE—SHEAR GATES (4”-30”) STYLE 44-02

General

Inspect all assemblies at time of delivery for shipping damage and to confirm compliance with order. The valve should be protected from rough handling. Water and debris should not be allowed to collect in valve.

I. Installation

- A. Check that valve end joints are clean
- B. Remove any material used to restrain the gate during shipment and storage.
- C. The gate should be checked to insure freedom of motion and proper operation.
- D. When handling the valve, do not use the outside mechanisms for lifting.
- E. Prepare pipe end as required, and install valve as per appropriate instructions for the specified joint. The valve is mounted 30 degrees offset from the vertical centerline to allow for proper closure.

II. Operations

Once installed, operation of the shear gate is simple and straight forward, using the lift handle to open and close the gate. The valve may be held in various open positions by using the adjustable catch hook on the lift handle.

III. Maintenance

Inspection should be conducted at least once a year. Joint should be visually inspected for leakage. Raise and lower the gate to check for free operation. Check bronze gate ring and seat ring for freedom from damage. The seating may be adjusted by tightening or loosening the hinge bolt nut to change the relationship between the hinge about and wedge. Use a feeler gauge of .004 to adjust gate disc to the proper seat gap around the total seating circumference. Remove any debris found on the inside of valve.

Periodic visual inspection of the coating is recommend with field cleaning and painting as required.

There are no recommended spare parts.

There are no lubrication requirements.