

# M&H VALVE-RESILIENT HINGED CHECK VALVE KEN FLEX—STYLE 506 (4”-12”)

Size Range	Seat Test psi	Hydrostatic Shell Test psi
4”-12”	250	500

<u>Available End Connections</u>	<u>Size Range</u>	<u>Style No.</u>
Flanged Ends	4”-12”	506

## Accessories / Options:

Back flush device

Tapped mounting pad – Sampling Station (Note contact factory for availability and spec.)

Tapped mounting pad – Position Indicator (Note: contact factory for availability and spec.)

Stainless Steel Hardware

## Features

All ductile iron construction.

Reversible reinforced resilient seat.

One moving part for long life.

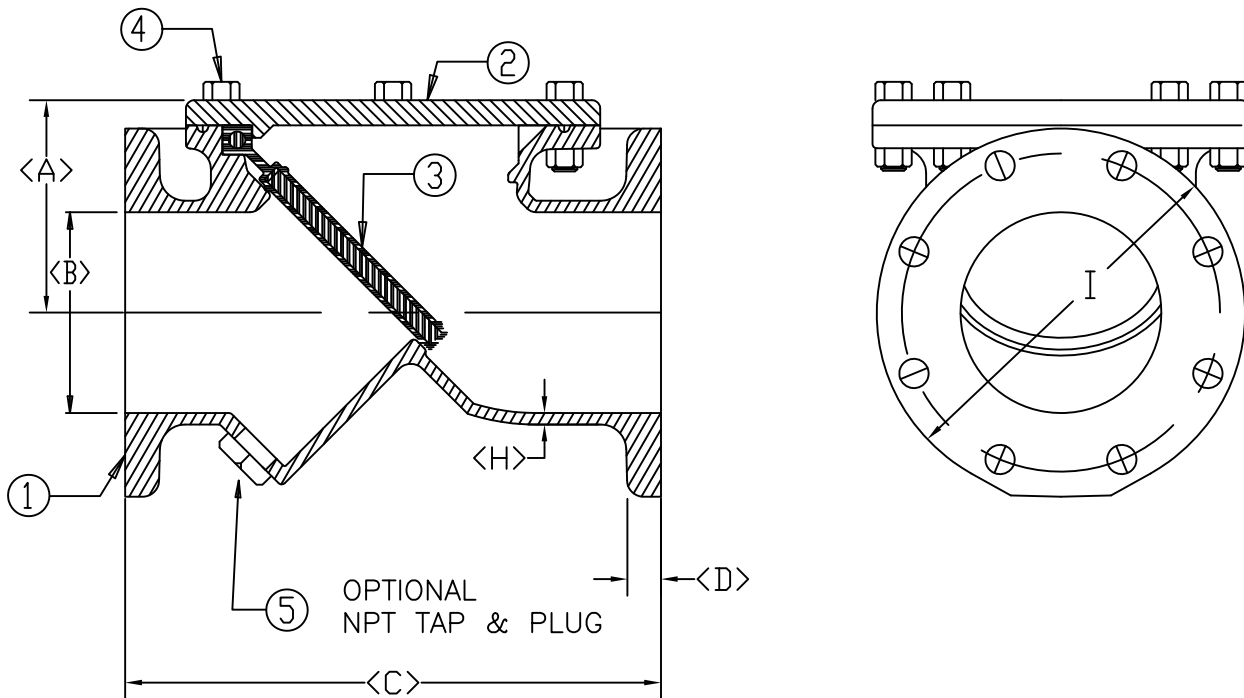
Fusion bonded epoxy for superior corrosion resistance.

ANSI-B-16.1 Flanges

250 PSI Working Pressure

500 PSI Shell Test

ASTM-A-536-65-45-12



PART NO.	NO. REQ'D	PART	MATERIAL
1	1	BODY	DUCTILE IRON
2	1	COVER PLATE	DUCTILE IRON
3	1	FLAPPER	RESILIENT FLAPPER, MET. INSERT
4	Varies	COVER BOLTS AND NUTS	STEEL
5	1	NPT PLUG, STD ALL VALVES	STEEL

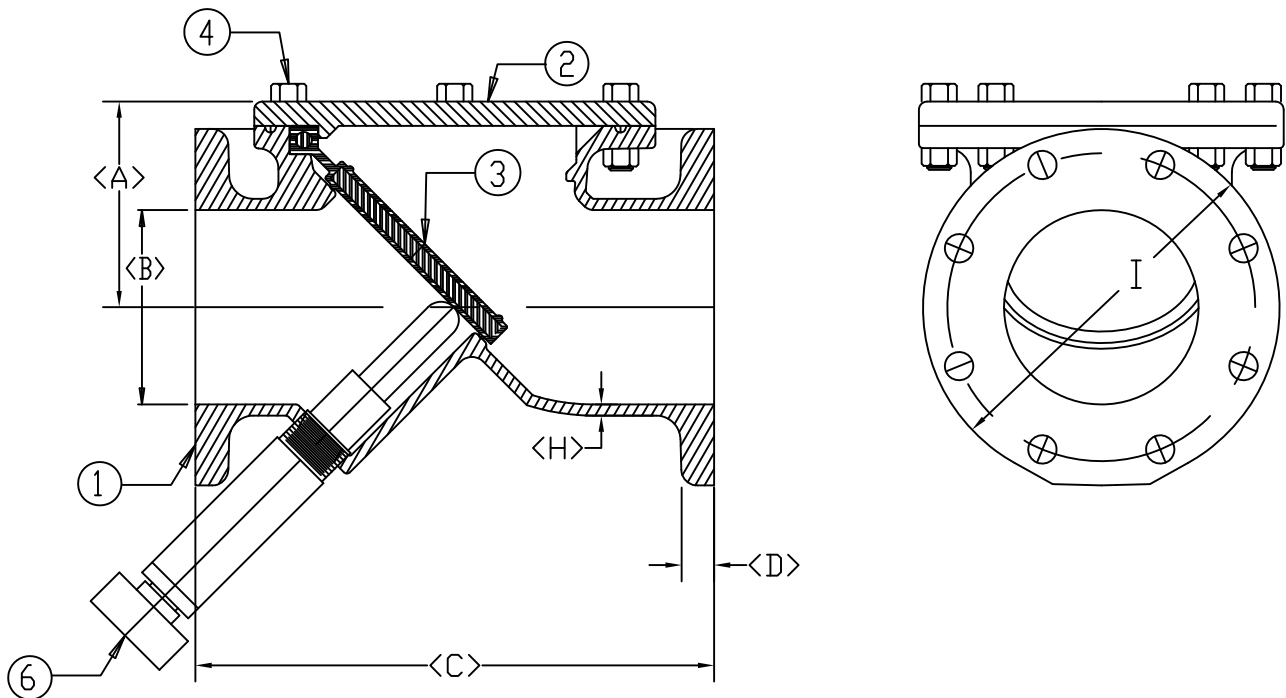
SIZE	A (approx)	Ø B	C	D (nominal)	Ø E	F	Ø G	H (nom.)	I	WEIGHT
4	4.88	4.00	13	1.00	7.50	8	0.75	0.31	9.0	70
6	6.38	6.00	16	1.06	9.50	8	0.88	0.34	11.0	126
8	7.63	8.00	19.5	1.19	11.75	8	0.88	0.34	13.5	190
10	9.06	10.00	24.5	1.25	14.25	12	1.00	0.38	16.0	273
12	10.63	12.00	27.5	1.28	17.00	12	1.00	0.41	19.0	357

E - BOLT CIRCLE DIA. END FLANGE  
 F - NUMBER OF BOLTS REQ'D EACH END FLANGE  
 G - BOLT HOLE DIAMETER FOR END FLANGE  
 END FLANGES CONFORM TO ANSI B16.1

M&H VALVE COMPANY  
 ANNISTON, ALABAMA  
 A DIVISION OF MCWANE INC.

DWN: TRIJ  
 DATE: 9/1/12  
 DWG. NO.  
 K506-S

4" THRU 12"  
 KENFLEX RESILIENT HINGED  
 CHECK VALVE  
 STYLE 506-S



PART NO.	NO. REQ'D	PART	MATERIAL
1	1	BODY	DUCTILE IRON
2	1	COVER PLATE	DUCTILE IRON
3	1	FLAPPER	RESILIENT FLAPPER, MET. INSERT
4	Varies	COVER BOLTS AND NUTS	STEEL
6	1	BACKFLOW JACK ASSEMBLY	STEEL COMPONENTS

SIZE	A (approx)	Ø B	C	D (nom.)	Ø E	F	Ø G	H (nom.)	I	WEIGHT
4	4.88	4.00	13	1.00	7.50	8	0.75	0.31	9.0	83
6	6.38	6.00	16	1.06	9.50	8	0.88	0.34	11.0	139
8	7.63	8.00	19.5	1.19	11.75	8	0.88	0.34	13.5	203
10	9.06	10.00	24.5	1.25	14.25	12	1.00	0.38	16.0	295
12	10.63	12.00	27.5	1.28	17.00	12	1.00	0.41	19.0	370

E - BOLT CIRCLE DIA. END FLANGE

F - NUMBER OF BOLTS REQ'D EACH END FLANGE

G - BOLT HOLE DIAMETER FOR END FLANGE

END FLANGES CONFORM TO ANSI B16.1

M&H VALVE COMPANY  
ANNISTON, ALABAMA  
A DIVISION OF MCWANE INC.

DWN: TRIJ  
DATE: 9/1/12  
DWG. NO.  
K506-J

4" THRU 12"  
KENFLEX RESILIENT HINGED  
CHECK VALVE WITH BACKFLOW JACK  
STYLE 506-J