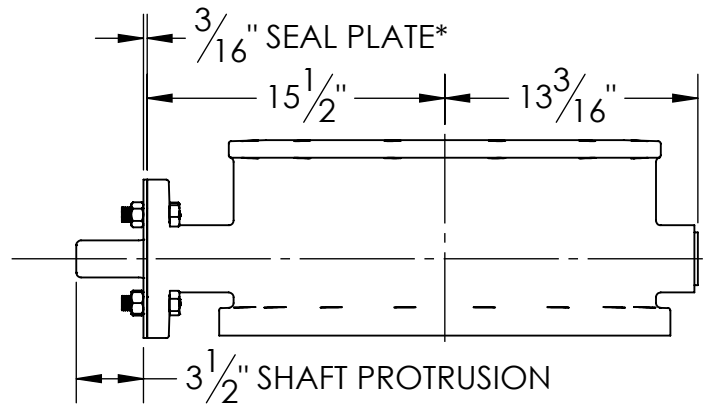
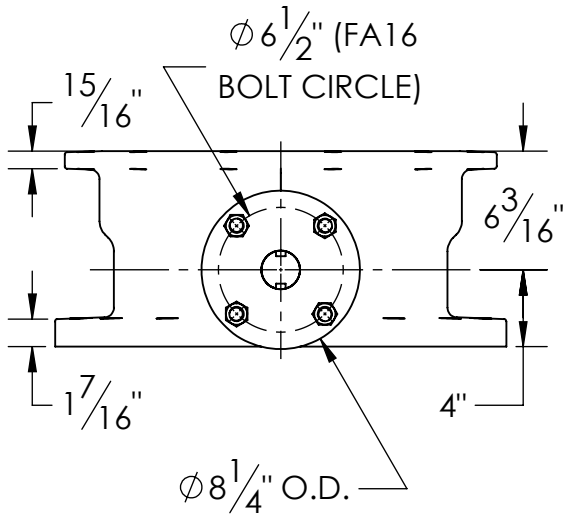
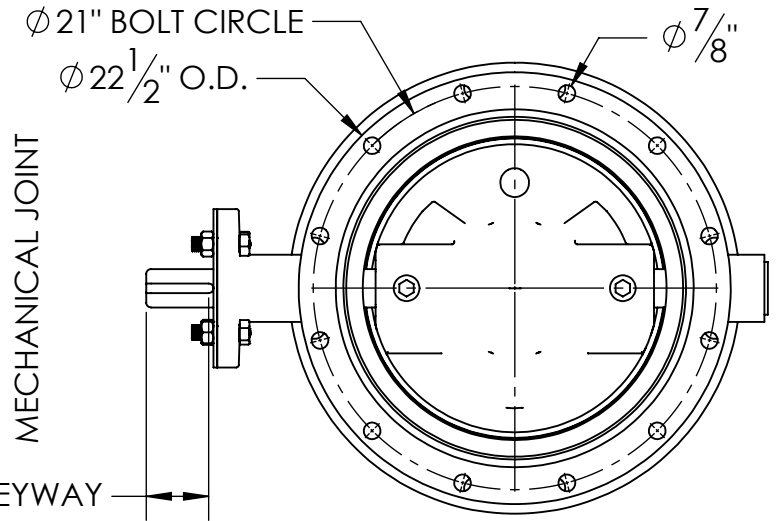
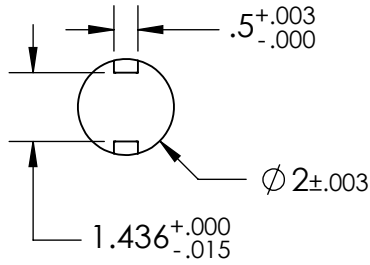
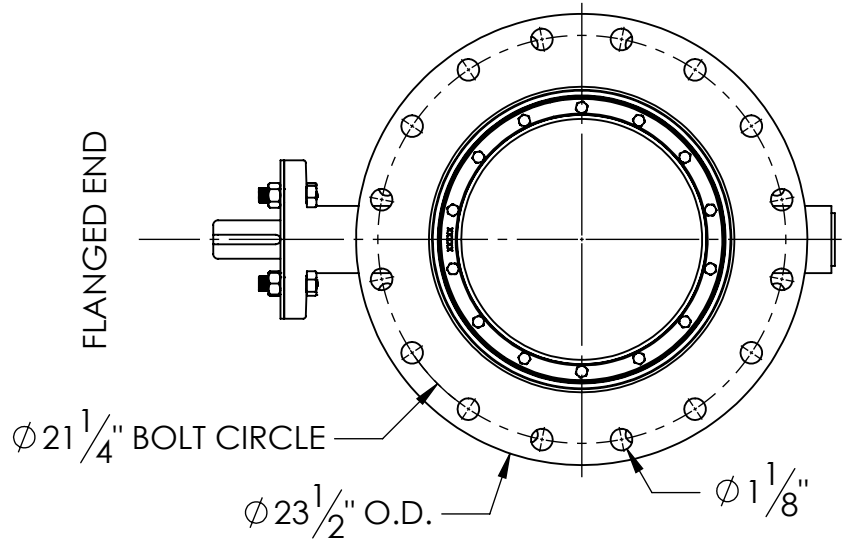


SHAFT INFORMATION



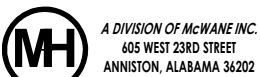
FLANGED END



1. FLOW MAY BE IN EITHER DIRECTION
2. VALVE SHAFT WILL MEET OR EXCEED AWWA C504 REQUIREMENTS
3. REFERENCE AWWA C504 FOR FLANGES AND DRILLING (ANSI 125)
4. (16) 1" BOLTS ON FLANGE (NO THREADED HOLES. VALVES PREDATING JUNE 2024 HAVE 4 THREADED HOLES. 1"-8 UNC, THREADED THRU)
5. (12) 3/4" BOLTS ON MECH. JOINT
6. RATED FOR 150PSI WORKING PRESSURE
7. GASKETS, GLANDS AND BOLTS FOR MECHANICAL JOINT FURNISHED WITH VALVE WHEN SPECIFIED ON ORDER
8. (*) SEAL PLATE REQUIRED TO COMPRESS SHAFT SEALS
9. BARESTEM VALVE SUPPLIED WITH FASTENERS TO HOLD SEAL PLATE DURING SHIPMENT

THIS DWG. AND ALL INFORMATION IS OUR PROPERTY AND SHALL NOT BE USED, COPIED, OR REPRODUCED WITHOUT WRITTEN CONSENT. DESIGN AND INVENTION RIGHTS RESERVED.

M&H VALVE COMPANY



A DIVISION OF McWANE INC.
605 WEST 23RD STREET
ANNISTON, ALABAMA 36202

BY:

CTJ

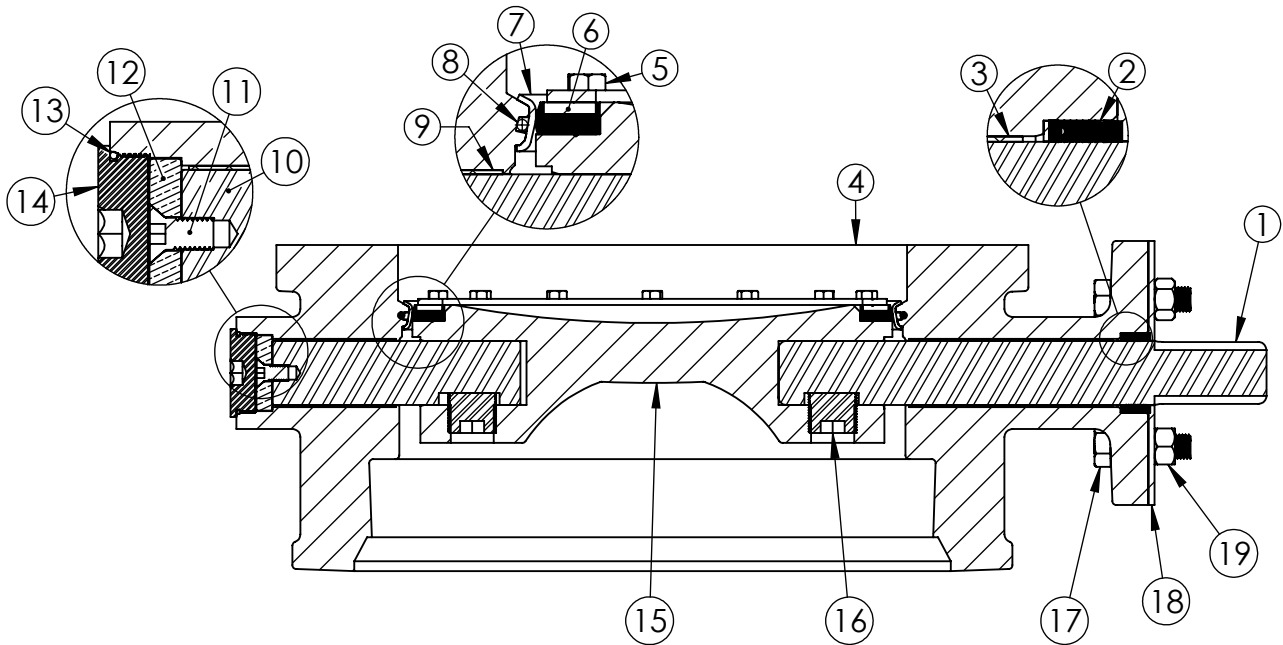
DATE:

06/28/2024

DWG

BD16IX1-B00000

16" AWWA C504 BUTTERFLY VALVE
FLANGED END X MECH. JOINT - CL150
BARESTEM




NOTES:

1. (*) SEAL PLATE PROVIDED WITH ALL BARESTEM VALVES, AND USED WITH ALL PURCHASED OPERATORS
2. OPERATOR FLANGE COMPLIES WITH MSS/ISO SP-101 FA16
3. OPERATOR SHAFTS OF VALVES PURCHASED WITHOUT M&H OPERATORS COMPLY WITH MSS/ISO SP-101 FA16 SHAFT LENGTH & KEYWAY ENGAGENTS
4. (**) SEAL PLATE HEX NUTS ARE ONLY SUPPLIED WITH BARESTEM VALVES, TO RETAIN THE SEAL PLATE AND V-RING PACKING. THE HEX BOLTS ARE USED FOR THIS, BUT ARE ALSO SUPPLIED WITH OPERATORS.

ITEM	DESCRIPTION	MATERIAL
1	OPERATOR SHAFT	304 STAINLESS STEEL, ASTM A276
2	V-RING PACKING	EPDM & BUNA-N
3	UPPER JOURNAL BEARING	NYLATRON
4	BUTTERFLY VALVE BODY	DUCTILE IRON, ASTM A-536
5	VANE RING HEXHEAD CAP SCREWS	304 STAINLESS STEEL
6	VANE SEAT RING	EPDM W/ STAINLESS STEEL INSERT
7	BODY SEAT RING	316 STAINLESS STEEL
8	BODY O-RING	EPDM
9	LOWER JOURNAL BEARING	NYLATRON
10	THRUST SHAFT	304 STAINLESS STEEL, ASTM A276
11	THRUST BEARING FLAT HEAD	304 STAINLESS STEEL
12	THRUST BEARING	BRONZE
13	BODY END PLUG	STEEL
14	BODY END PLUG O-RING	EPDM
15	VANE	DUCTILE IRON, ASTM A-536
16	VANE SHAFT TORGE PLUG	304 STAINLESS STEEL
17	SEAL PLATE NUT **	304 STAINLESS STEEL
18	SEAL PLATE *	STEEL
19	SEAL PLATE BOLT	304 STAINLESS STEEL

THIS DWG. AND ALL INFORMATION IS OUR PROPERTY AND SHALL NOT BE USED, COPIED, OR REPRODUCED WITHOUT WRITTEN CONSENT. DESIGN AND INVENTION RIGHTS RESERVED.

M&H VALVE COMPANY  A DIVISION OF McWANE INC. 605 WEST 23RD STREET ANNISTON, ALABAMA 36202	BY: CTJ DWG	DATE: 06/28/2024
	BBBBIX1-1111	

14"-24" AWWA C504 C150 BUTTERFLY VALVE
ISO STYLE BODY SUB-ASM MATERIAL LIST