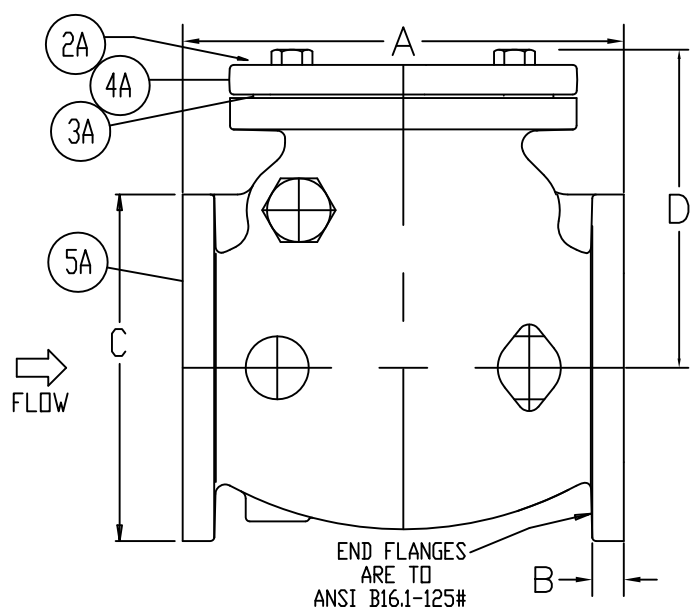
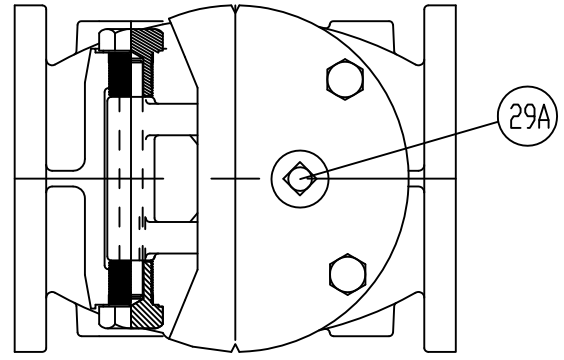
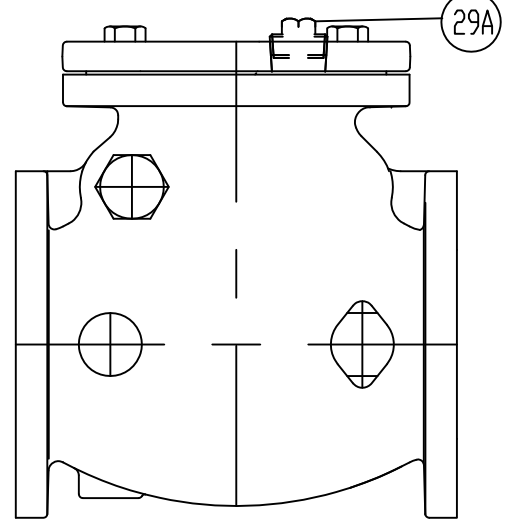


TAPPED COVER OPTION (VIEW 1)



TAPPED COVER OPTION (VIEW 2)

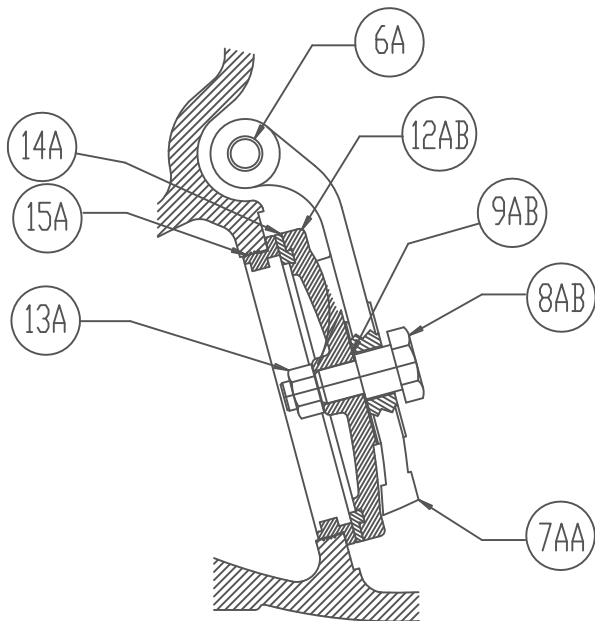


SIZE	A	B	C	D	E	WEIGHT
2	8	0.66	6	6	6	35
2 1/2	8.5	0.72	7	6.63	7	50
3	9.5	0.78	7.5	7.06	7.5	61
4	11.5	1.00	9	8.31	9	119
6	14	1.06	11	10.06	11	190
8	19.5	1.25	13.5	12.38	13.50	347
10	24.5	1.31	16	13.93	16.75	566
12	27.5	1.38	19	16.18	19	774

PART	QTY	DESCRIPTION	MATERIAL & ASTM SPEC.
1A	2	SIDE PLUG	BRONZE
2A	4	BOLTS	18-8 STAINLESS STEEL
3A	1	O-RING	BUNA-N
4A	1	CAP	CI A-126 CLASS B
5A	1	BODY	CI A-126 CLASS B
6A	1	HINGE PIN	304 STAINLESS STEEL A-276
29A	1	TAPERED PLUG (OPTIONAL)	STEEL

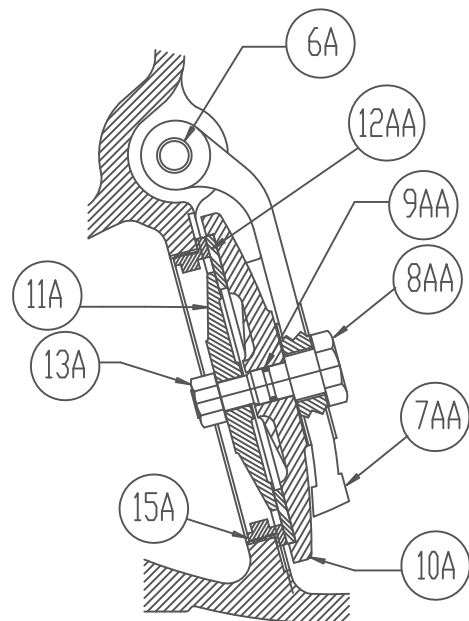
STYLE-59-02A 2"-12" WITH RUBBER FACED CLAPPER
 STYLE-59-02 2"-12" WITH BRONZE FACED CLAPPER
 STYLE-59-02AT 2"-12" WITH RUBBER FACED CLAPPER-TAPPED COVER
 STYLE-59-02T 2"-12" WITH BRONZE FACED CLAPPER-TAPPED COVER

<p>M&H VALVE COMPANY ANNISTON, ALABAMA A DIVISION OF MCWANE INC.</p>	DWN: TRIJ	<p>2" THRU 12" STANDARD / PLAIN SWING CHECK AWWA C508-STYLE 59-02 (PAGE 1 of 2)</p>
	DATE: 9/1/12	
	DWG. NO. CV-A1-PC	



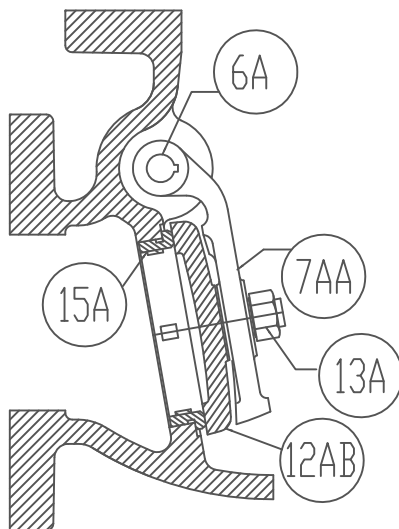
4'-12" PLAIN CHECK BRONZE SEATED DISC ASSEMBLY

6A	1	HINGE PIN	STAINLESS STEEL A-276 (304)
7AA	1	HINGE	DUCTILE IRON A-536
8AB	1	DISC BOLT	(4'-8") STEEL---(10'-12") BRONZE
9AB	2	DISC BOLT WASHER (4'-8")	
12AB	1	DISC	CAST IRON A-126 CLASS B
13A	1	DISC NUT	18-8 STAINLESS STEEL
14A	1	DISC RING	BRONZE
15A	1	SEAT RING	BRONZE



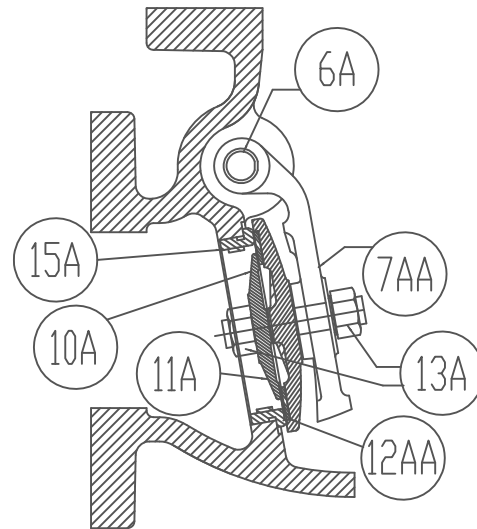
4'-12" PLAIN CHECK RESILIENT SEATED DISC ASSEMBLY

6A	1	HINGE PIN	STAINLESS STEEL A-276 (304)
7AA	1	HINGE	DUCTILE IRON A-536
8AA	1	DISC BOLT	(4'-8") STEEL---(10'-12") BRONZE
9AA	1	DISC BOLT O-RING (10',12")	SYNTHETIC RUBBER
10A	1	DISC HOLDER	CAST IRON A-126 CLASS B
11A	1	DISC PLATE	BRONZE
12AA	1	DISC	NITRILE (BUNA N) RUBBER
13A	1	DISC NUT	18-8 STAINLESS STEEL
15A	1	SEAT RING	BRONZE



2'-3" PLAIN CHECK BRONZE SEATED DISC ASSEMBLY

6A	1	HINGE PIN	STAINLESS STEEL A-276 (304)
7AA	1	HINGE	BRONZE
12AB	1	DISC (WITH INTEGRAL DISC BOLT)	BRONZE
13A	1	DISC NUT	18-8 STAINLESS STEEL
15A	1	SEAT RING	BRONZE



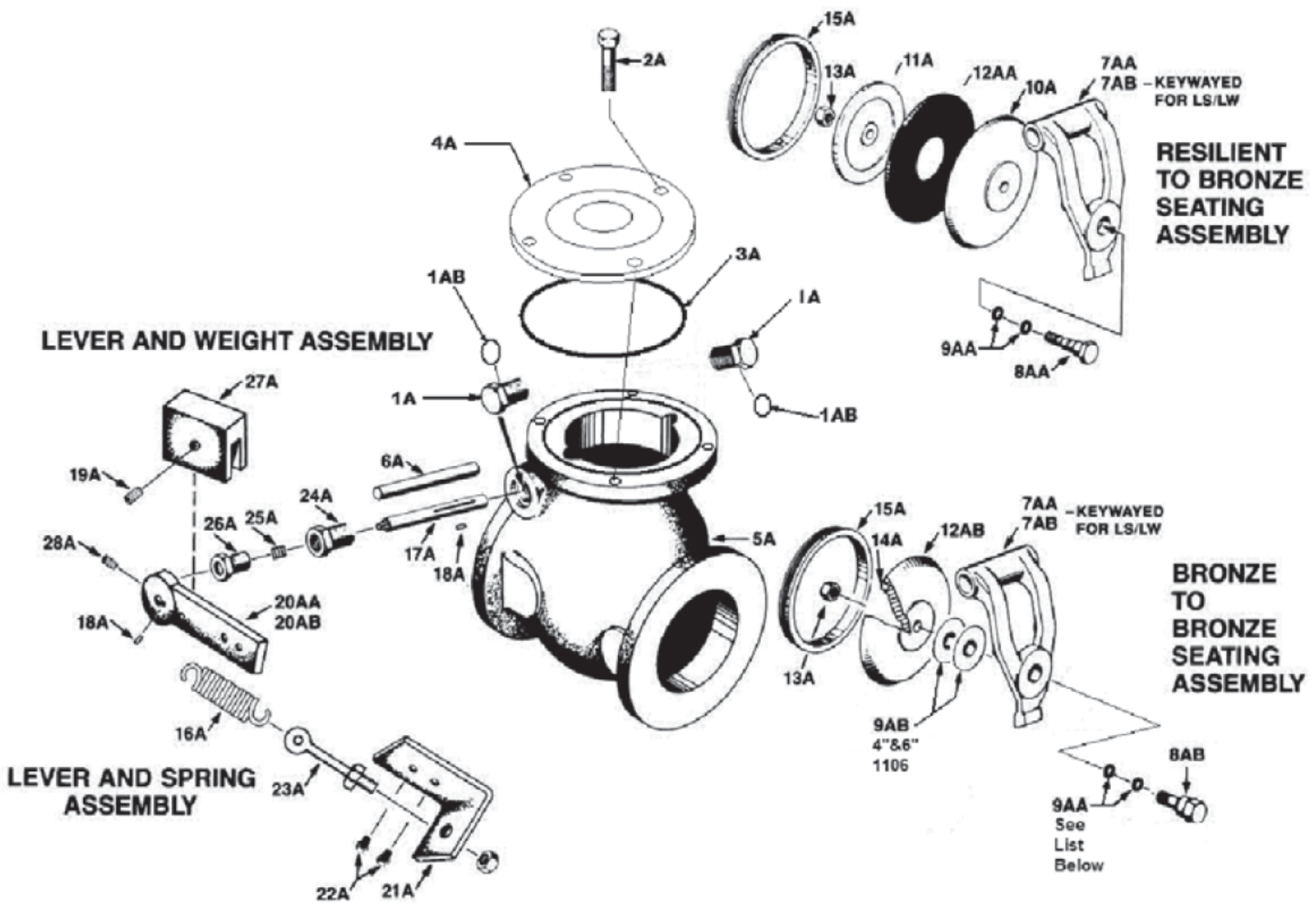
2'-3" PLAIN CHECK RESILIENT SEATED DISC ASSEMBLY

6A	1	HINGE PIN	STAINLESS STEEL A-276 (304)
7AA	1	HINGE	BRONZE
10A	1	DISC HOLDER (WITH INTEGRAL DISC BOLT)	BRONZE
11A	1	DISC PLATE	BRONZE
12AA	1	DISC	NITRILE (BUNA N) RUBBER
13A	2	DISC NUT	18-8 STAINLESS STEEL
15A	1	SEAT RING	BRONZE

M&H VALVE COMPANY
ANNISTON, ALABAMA
A DIVISION OF MCWANE INC.

DWN: TRIJ
DATE: 9/1/12
DWG. NO.
CV-A2-PC

2" THRU 12"
STANDARD / PLAIN SWING CHECK
AWWA C508-STYLE 59-02
(PAGE 2 of 2)



LEVER AND WEIGHT ASSEMBLY

RESILIENT TO BRONZE SEATING ASSEMBLY

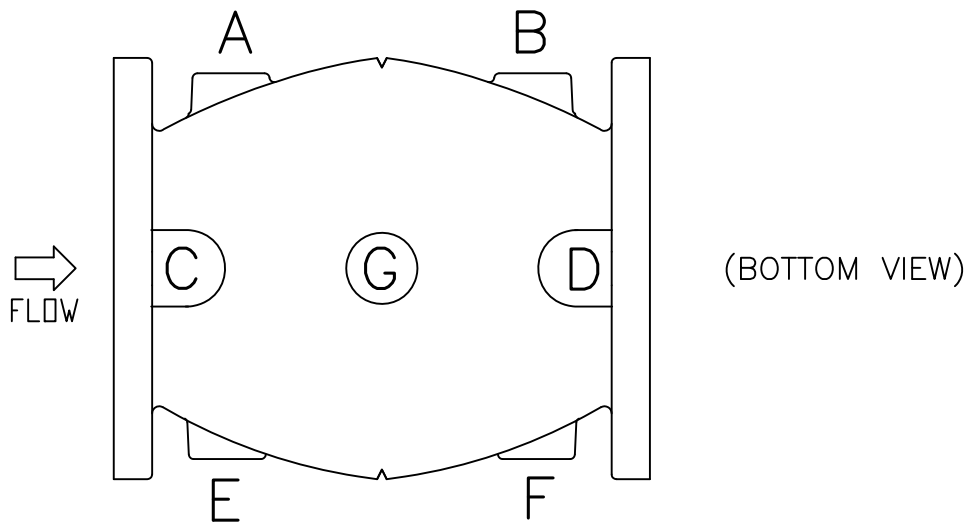
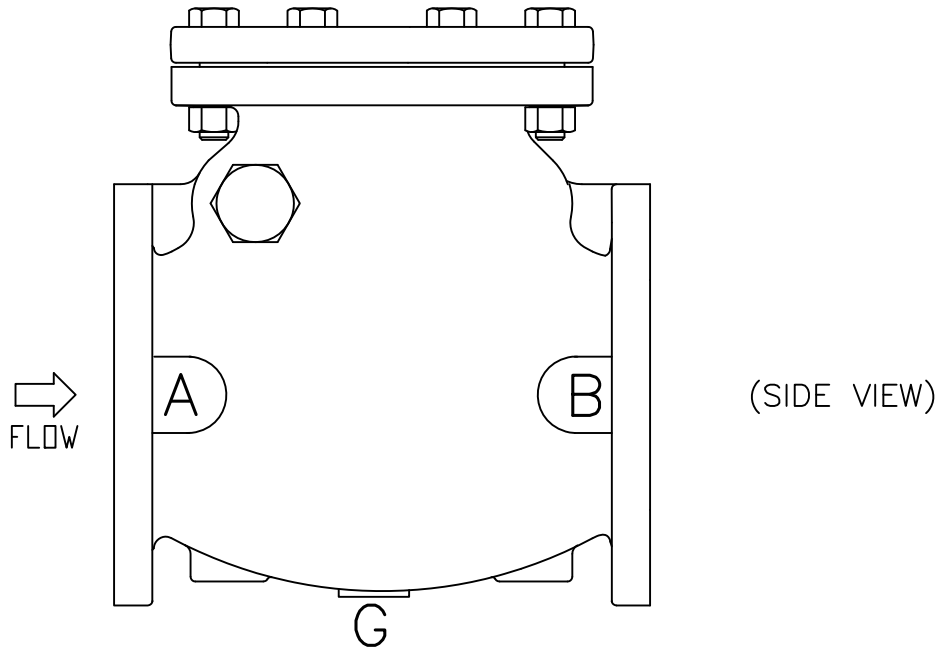
BRONZE TO BRONZE SEATING ASSEMBLY

LEVER AND SPRING ASSEMBLY

KEYWAYED FOR LS/LW

9AA See List Below

9AB 4" & 6" 1106



When ordering Check Valves tapped for bypass or drain, specify exact location and size of tap using letters above for boss designation. These locations of drain and by-pass tappings conform to the Manufacturers Standardization Society Specification SP-45-1953

AWWA SWING CHECK VALVES MAXIMUM TAP SIZE FOR BOSS LOCATIONS							
SIZE	A	B	C	D	E	F	G
2	0.75	0.75	0.75	NA	NA	NA	NA
2.5	0.75	0.75	0.75	NA	0.75	0.75	NA
3	0.75	0.75	0.75	NA	0.75	0.75	NA
4	1	1	1.25	1.25	1	1	NA
6	1.25	1.25	1.25	1.25	1.25	1.25	NA
8	2	2	1.25	1.25	2	2	0.75
10	2	2	1.25	1.25	2	2	0.75
12	2	2	1.25	1.25	2	2	0.75

M&H VALVE COMPANY
ANNISTON, ALABAMA
A DIVISION OF MCWANE INC.

DWN: TRIJ
DATE: 9/1/12
DWG. NO.
CV-TB

2" THRU 12"
SWING CHECK VALVES (ALL STYLES)
AWWA C508
LOCATION AND DIMENSIONS OF
TAPPING BOSSES