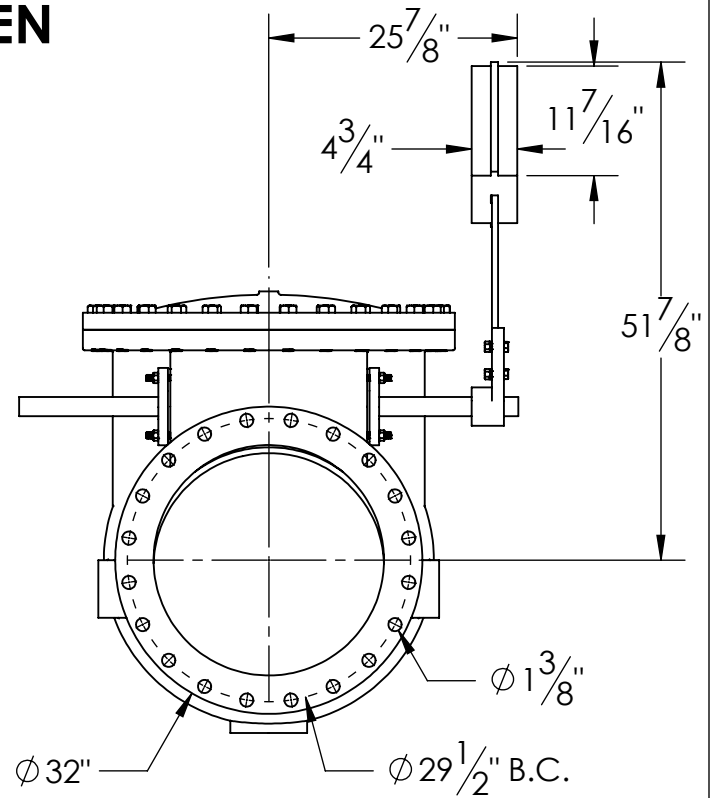
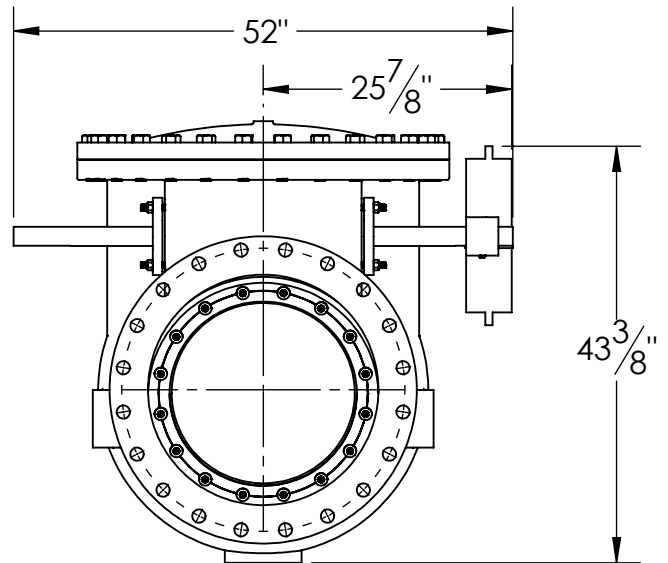
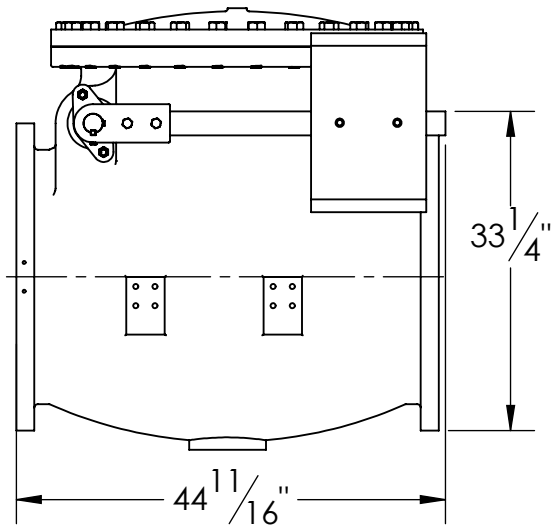


# OPEN



# CLOSED



1. FLOW DIRECTION IS SPECIFIED ON VALVE.
2. VALVE WILL MEET OR EXCEED AWWA C508 REQUIREMENTS.
3. RATED AND TESTED FOR 150psi WORKING PRESSURE.
4. VALVES ARE SUITABLE FOR HORIZONTAL OR VERTICAL POSITION INSTALLATION.
5. REFERENCE AWWA C508 FOR FLANGES AND DRILLING.
6. (20) 1 1/4" BOLTS ON EACH FLANGE (NO THREADED HOLES)

THIS DWG. AND ALL INFORMATION IS OUR PROPERTY AND SHALL NOT BE USED, COPIED, OR REPRODUCED WITHOUT WRITTEN CONSENT. DESIGN AND INVENTION RIGHTS RESERVED.



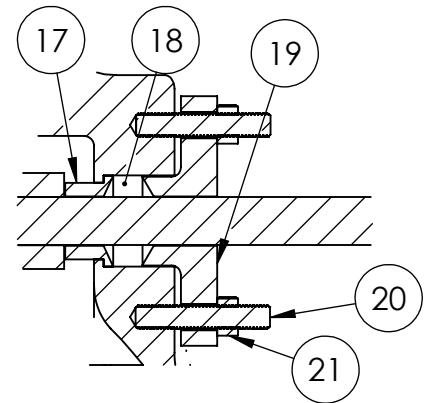
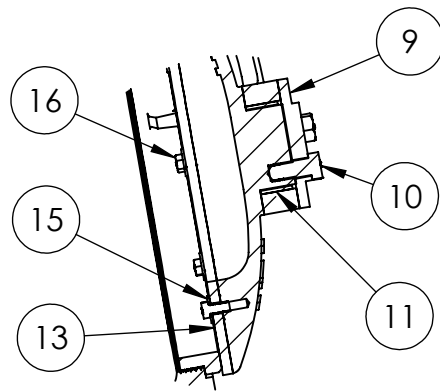
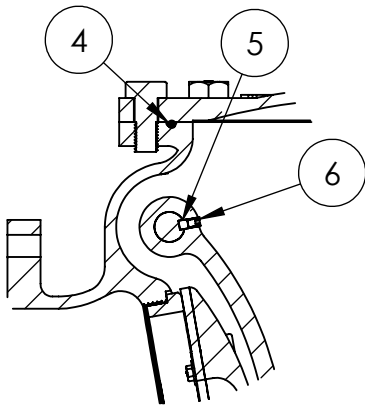
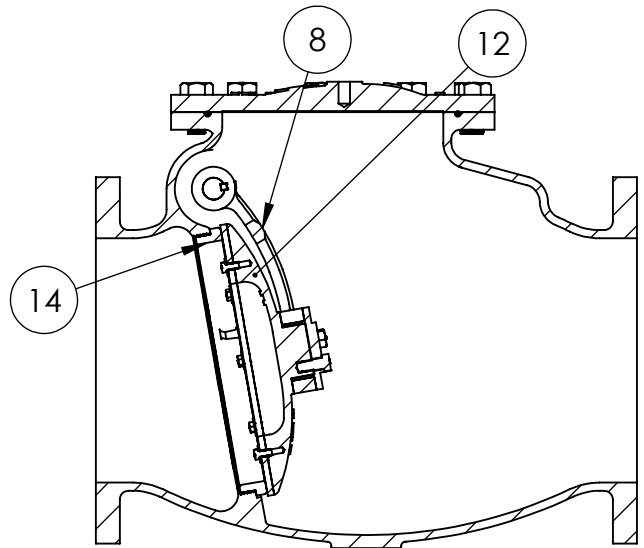
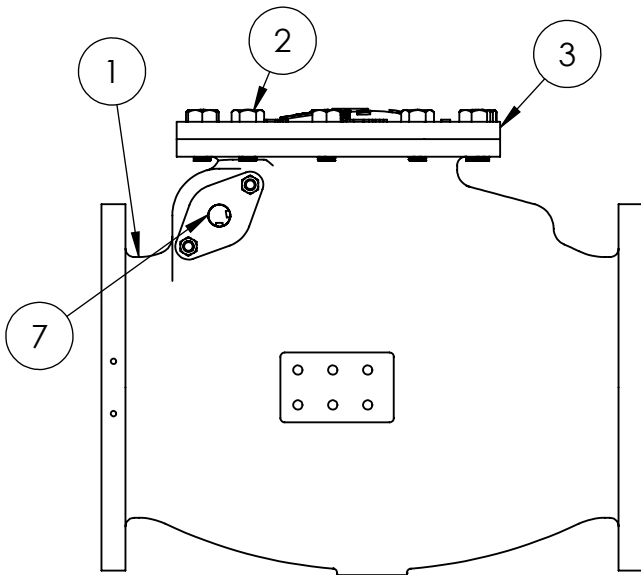
**M&H VALVE COMPANY**

A DIVISION OF McWANE INC.  
P.O. BOX 2088  
ANNISTON, ALABAMA 36202

DWG. NO.  
CD24-X1111-0020-N00

|                  |      |
|------------------|------|
| DRAWN: EMW       | REV. |
| DATE: 03/17/2021 | -    |

24" SPECIAL CHECK VALVE - FLANGED ENDS - LEVER AND WEIGHT DIMENSIONS



**CLAPPER ARM DETAILS**

**CLAPPER DETAILS**

**STUFFING BOX DETAILS**

| ITEM NO. | DESCRIPTION                    | MATERIAL                               |
|----------|--------------------------------|--|
| 1        | BODY - F.E.                    | CAST IRON ASTM A126 CL. B              |
| 2        | COVER BOLTS                    | ASTM A-307 GR. B, OR A EZ PLATED       |
| 3        | COVER                          | CAST IRON ASTM A126 CL. B              |
| 4        | COVER O-RING                   | BUNA "N" DUROMETER 70 APPROVED         |
| 5        | CLAPPER ARM KEY                | 304 STAINLESS STEEL                    |
| 6        | SET SCREW                      | ALLOY STEEL (RC 45-63)                 |
| 7        | HINGE PIN                      | STAINLESS STEEL ASTM A-276 TYPE 303    |
| 8        | CLAPPER ARM                    | DUCTILE IRON A536 65-45-12 OR 70-50-05 |
| 9        | CLAPPER CAP PLATE              | 304 STAINLESS STEEL                    |
| 10       | HEX BOLT CAP PLATE             | 18-8 STAINLESS STEEL                   |
| 11       | CLAPPER ARM BUSHING            | BRASS C26000                           |
| 12       | CLAPPER                        | DUCTILE IRON A536 65-45-12 OR 70-50-05 |
| 13       | ENCAPSULATED RUBBER CLAMP RING | BUNA "N" DUROMETER 70 APPROVED         |
| 14       | BODY RING                      | BRONZE ALLOY C89836                    |
| 15       | WASHER, FLAT                   | 18-8 STAINLESS STEEL                   |
| 16       | HEX BOLT CLAMP RING            | 18-8 STAINLESS STEEL                   |
| 17       | STUFFING BOX BUSHING           | BRONZE ALLOY C87850                    |
| 18       | PACKING                        | MULTI-LOK BRAID STYLE ML2254 PTFE      |
| 19       | STUFFING BOX GLAND             | DUCTILE IRON A536 65-45-12 OR 70-50-05 |
| 20       | STUD                           | STEEL ASTM A307, EZ PLATED             |
| 21       | HEX NUT                        | 18-8 STAINLESS STEEL                   |

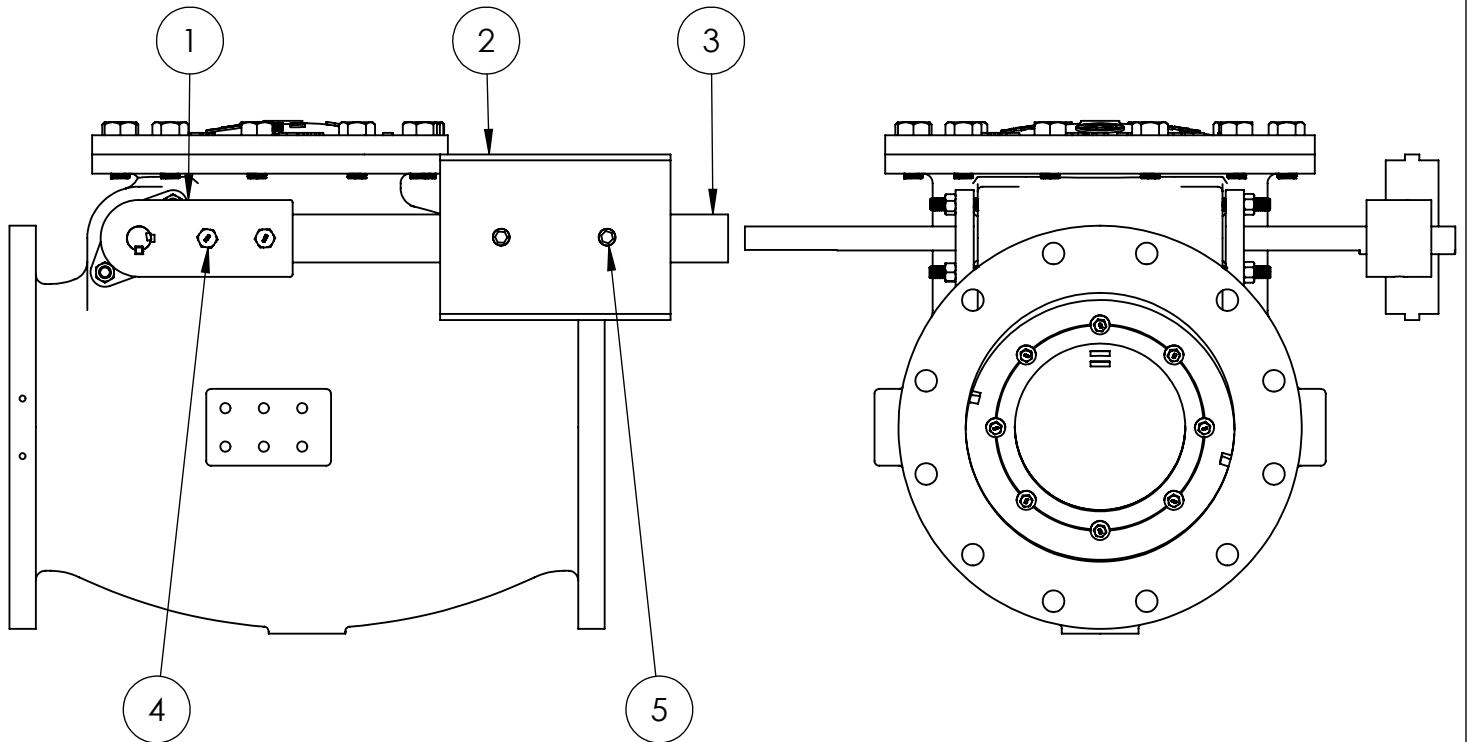
THIS DWG. AND ALL INFORMATION IS OUR PROPERTY AND SHALL NOT BE USED, COPIED, OR REPRODUCED WITHOUT WRITTEN CONSENT. DESIGN AND INVENTION RIGHTS RESERVED.



**M&H VALVE COMPANY**  
 A DIVISION OF McWANE INC.  
 P.O. BOX 2088  
 ANNISTON, ALABAMA 36202

DWG. NO.  
 CBAA-X1111-0000-N00  
 DRAWN: EMW  
 DATE: 10/5/2021  
 REV. -

14" THRU 30" AWWA C508  
 SPECIAL CHECK VALVES  
 FLANGED ENDS - NSF61/372  
 MATERIAL LIST



## LEVER & WEIGHT COMPONENTS FOR CHECK VALVES

| ITEM NO. | DESCRIPTION        | MATERIAL                               |
|----------|--------------------|--|
| 1        | WEIGHT LEVER ARM   | DUCTILE IRON A536 65-45-12 OR 70-50-05 |
| 2        | WEIGHT             | FAB. STEEL                             |
| 3        | WEIGHT ARM BAR     | CR STEEL C-1018/1020                   |
| 4        | ARM BAR FASTENER   | 18-8 STAINLESS STEEL                   |
| 5        | WEIGHT TORQUE PLUG | 18-8 STAINLESS STEEL                   |

THIS DWG. AND ALL INFORMATION IS OUR PROPERTY AND SHALL NOT BE USED, COPIED, OR REPRODUCED WITHOUT WRITTEN CONSENT. DESIGN AND INVENTION RIGHTS RESERVED.



**M&H VALVE COMPANY**

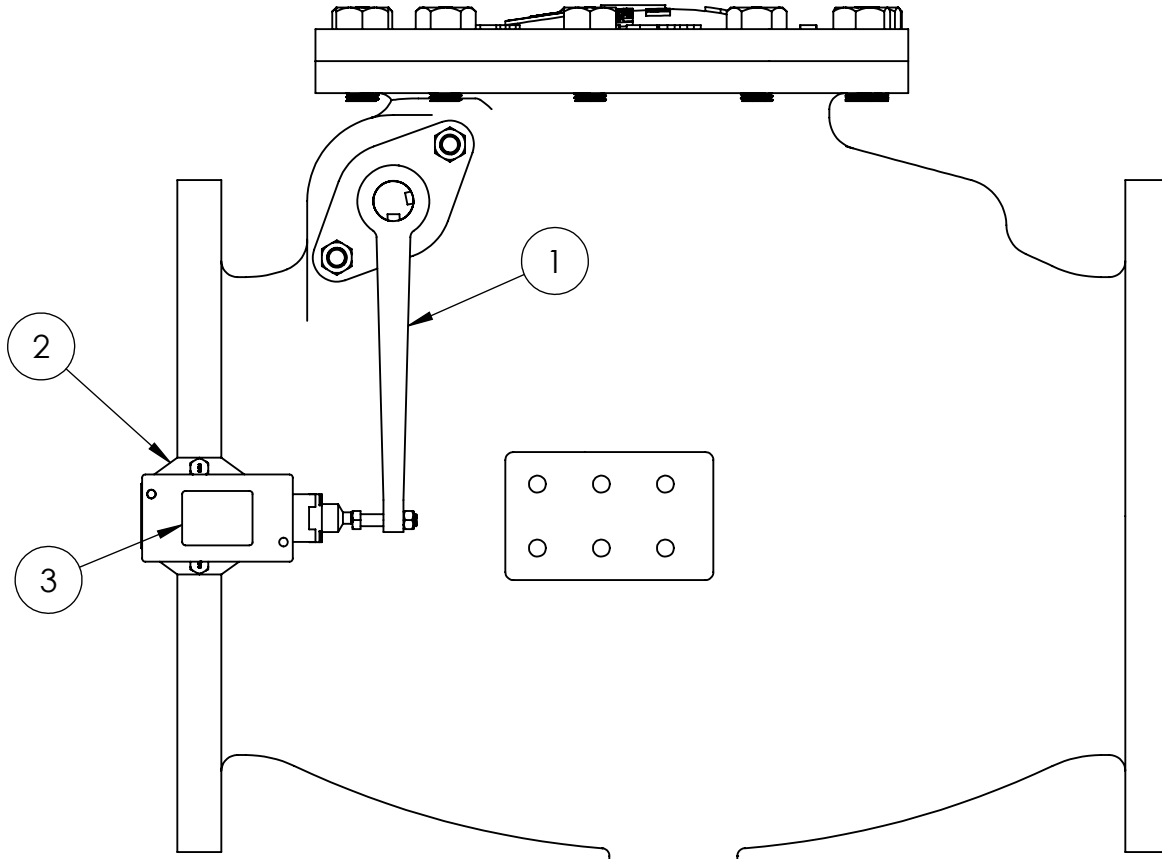
A DIVISION OF McWANE INC.  
P.O. BOX 2088  
ANNISTON, ALABAMA 36202

DWG. NO.  
CBBB-S1111-0020-N00

|                         |             |
|-------------------------|-------------|
| <b>DRAWN:</b> EMW       | <b>REV.</b> |
| <b>DATE:</b> 02/08/2021 | -           |

14" THRU 24" LEVER & WEIGHT  
MATERIAL LIST

# OPTIONAL BY SPECIAL REQUEST



## LIMIT SWITCH CHECK VALVE ASSEMBLY

| ITEM NO. | DESCRIPTION      | MATERIAL        |
|----------|------------------|-----------------|
| 1        | TRIPPER ARM      | STEEL           |
| 2        | MOUNTING BRACKET | STEEL           |
| 3        | LIMIT SWITCH     | SD-D-TYPE-CR53E |

THIS DWG. AND ALL INFORMATION IS OUR PROPERTY AND SHALL NOT BE USED, COPIED, OR REPRODUCED WITHOUT WRITTEN CONSENT. DESIGN AND INVENTION RIGHTS RESERVED.



**M&H VALVE COMPANY**

A DIVISION OF McWANE INC.  
P.O. BOX 2088  
ANNISTON, ALABAMA 36202

DWG. NO.  
CBAA-S1111-0000-Y00

DRAWN: EMW  
DATE: 02/22/2021

REV.  
-

14" THRU 36" LIMIT SWITCH OPTION -  
AWWA C508 CHECK VALVES  
NSF61/372 - MATERIAL LIST