

1. FLOW MAY BE IN EITHER DIRECTION
2. VALVE SHAFT WILL MEET OR EXCEED AWWA C504 REQUIREMENTS
3. REFERENCE AWWA C504 FOR FLANGES AND DRILLING (ANSI 125)
4. 72 TURNS TO CLOSE
5. (32) 1 1/2" BOLTS ON EACH FLANGE (4 THREADED HOLES. 1 1/2"-6 UNC, 2 1/4" MIN DEPTH)
6. OPERATED BY 18" HAND WHEEL
7. RATED FOR 150PSI WORKING PRESSURE

THIS DWG. AND ALL INFORMATION IS OUR PROPERTY AND SHALL NOT BE USED, COPIED, OR REPRODUCED WITHOUT WRITTEN CONSENT. DESIGN AND INVENTION RIGHTS RESERVED.

**M&H VALVE COMPANY**



A DIVISION OF McWANE INC.  
 605 WEST 23RD STREET  
 ANNISTON, ALABAMA 36202

BY:

CTJ

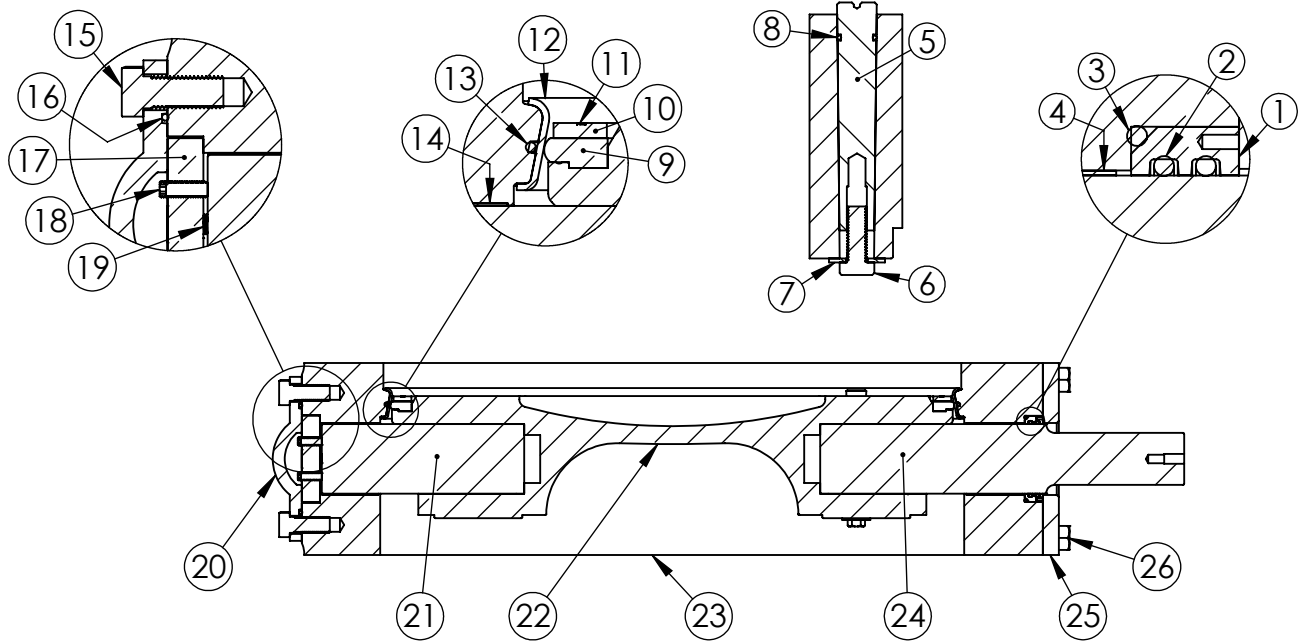
DATE:

09/06/2024

DWG

BD36SF1-M22110

36" AWWA C504 BUTTERFLY VALVE  
 FLANGED ENDS - CL150  
 HAND WHEEL OPERATOR - OPEN LEFT



ITEM	DESCRIPTION	MATERIAL
1	SHAFT CARTRIDGE SEAL	BRONZE
2	CARTRIDGE SEAL O-RING (I.D.)	BUNA-N
3	CARTRIDGE SEAL O-RING (O.D.)	BUNA-N
4	UPPER BODY BUSHING	FIBERGLIDE BACKED WITH STAINLESS STEEL
5	TAPER PIN	416 STAINLESS STEEL
6	TAPER PIN BOLT	304 STAINLESS STEEL
7	TAPER PIN WASHER	416 STAINLESS STEEL
8	TAPER PIN O-RING	EPDM
9	VANE SEAT RING	EPDM
10	VANE CLAMP RING	304 STAINLESS STEEL, ASTM A-276
11	VANE CLAMP RING BOLTS	304 STAINLESS STEEL
12	BODY SEAT RING	316 STAINLESS STEEL, ASTM A-276
13	BODY O-RING	EPDM
14	LOWER BODY BUSHING	FIBERGLIDE BACKED WITH STAINLESS STEEL
15	END COVER BOLTS	304 STAINLESS STEEL
16	END COVER O-RING	EPDM
17	THRUST BEARING	BRONZE
18	THRUST BEARING SET SCREW	304 STAINLESS STEEL
19	THRUST BEARING CAP SCREW	304 STAINLESS STEEL
20	END COVER	DUCTILE IRON, ASTM A-536, GR 70-50-05
22	VANE	DUCTILE IRON, ASTM A-536, GRADE 70-50-05
23	VALVE BODY	DUCTILE IRON, ASTM A-536, GR 70-50-05
24	OPERATOR SHAFT	304 STAINLESS STEEL, ASTM A-276
25	OPERATOR PLATE	STEEL
26	OPERATOR PLATE BOLTS	304 STAINLESS STEEL

THIS DWG. AND ALL INFORMATION IS OUR PROPERTY AND SHALL NOT BE USED, COPIED, OR REPRODUCED WITHOUT WRITTEN CONSENT. DESIGN AND INVENTION RIGHTS RESERVED.

**M&H VALVE COMPANY**



A DIVISION OF McWANE INC.  
605 WEST 23RD STREET  
ANNISTON, ALABAMA 36202

BY:

CTJ

DATE:

07/18/2024

DWG

BBCCSF1-1111

30"-48" AWWA C504 BUTTERFLY VALVE  
FLANGED ENDS - CL150  
BODY SUB-ASM MATERIAL LIST