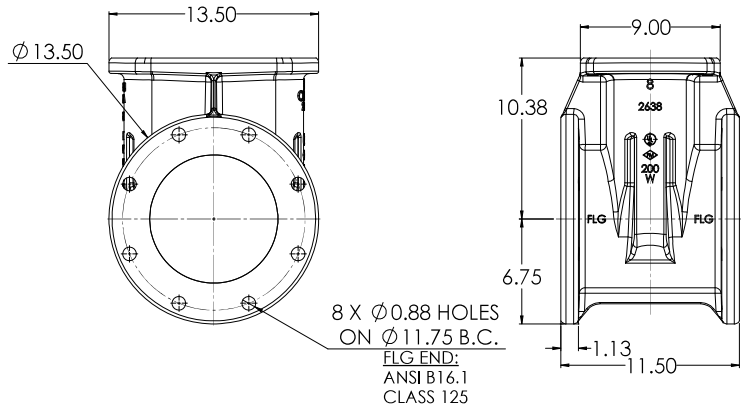
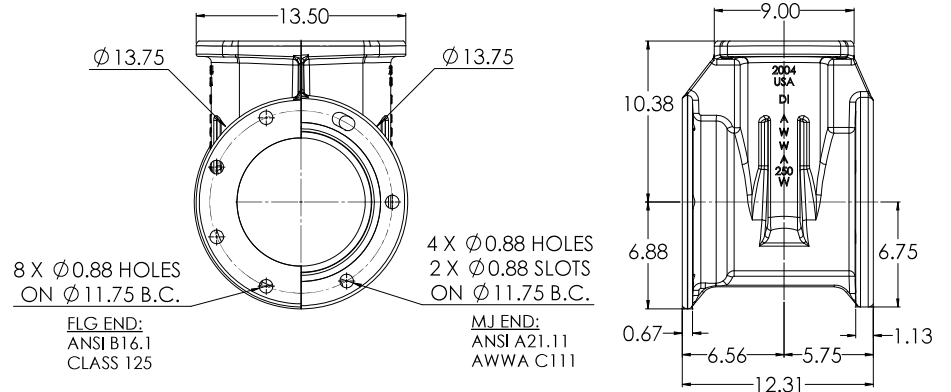


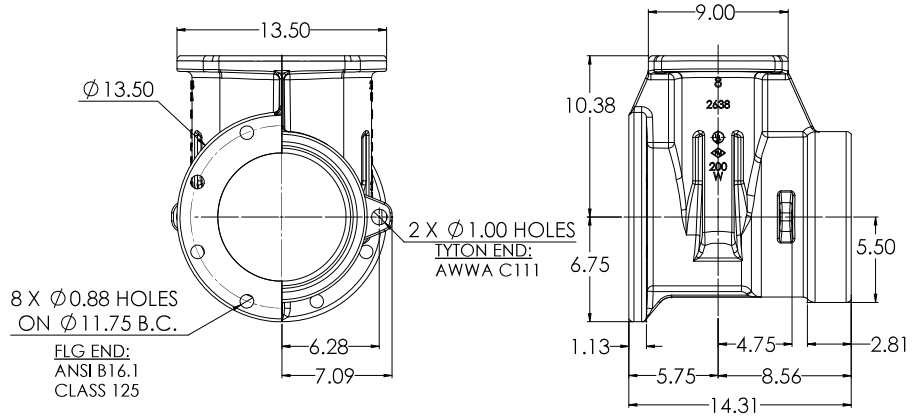
**08" C515 FLG X FLG**



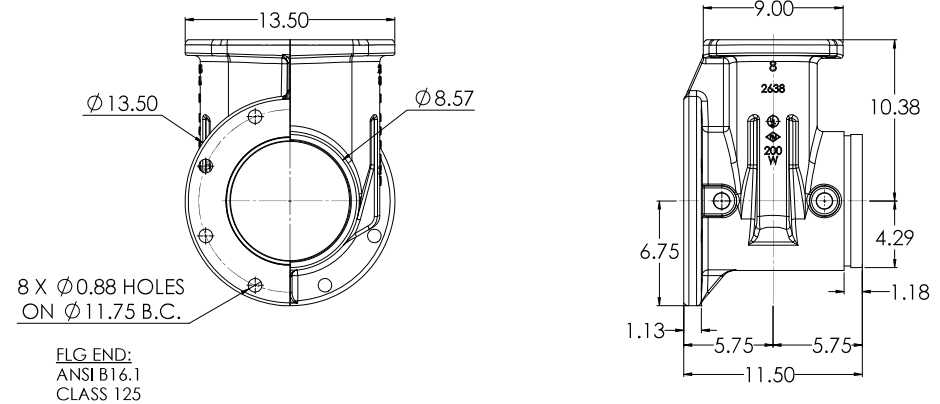
**08" C515 FLG X MJ**



**08" C515 FLG X TYTON**

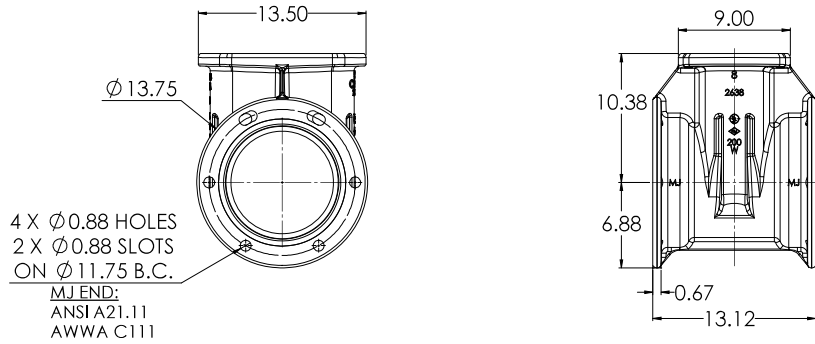


**08" C515 FLG X GRVD**

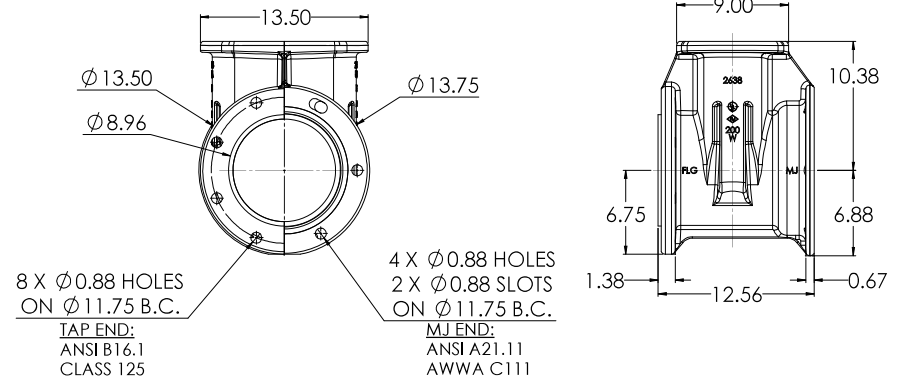


<b>AWWA</b> AMERICAN WATER WORKS ASSOCIATION 1801 L STREET, N.W. WASHINGTON, D.C. 20036-4151 TEL: 202/462-6580 FAX: 202/462-6598 WWW.AWWA.ORG		<b>AWWA</b> AMERICAN WATER WORKS ASSOCIATION 1801 L STREET, N.W. WASHINGTON, D.C. 20036-4151 TEL: 202/462-6580 FAX: 202/462-6598 WWW.AWWA.ORG		08" C515 NRS GEARED RESILIENT WEDGE GATE VALVE LBS. T:5 12/2/2020 CW		8
--	--	--	--	--	--	---

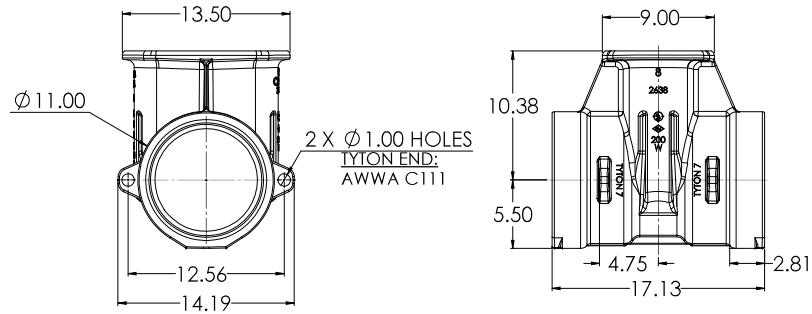
**08" C515 MJ X MJ**



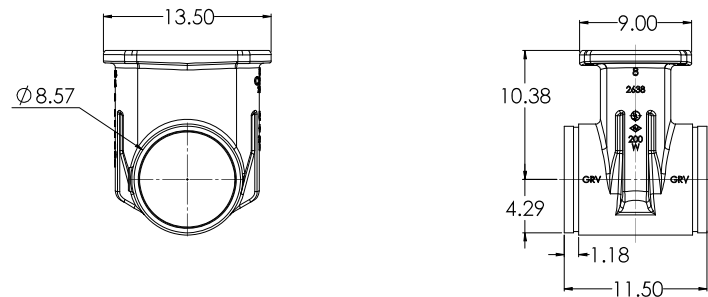
**08" C515 MJ X TAP**



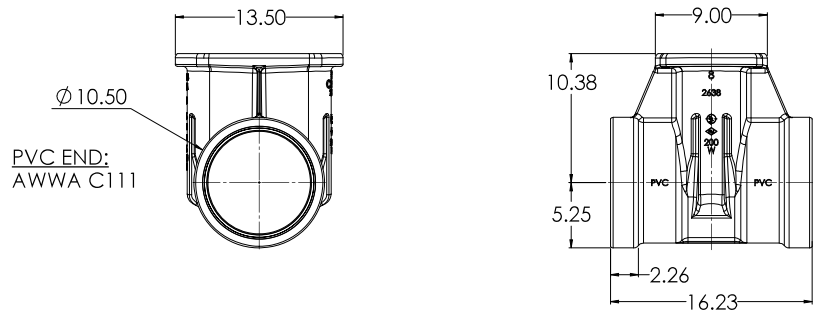
**08" C515 TYTON X TYTON**



**08" C515 GRVD X GRVD**



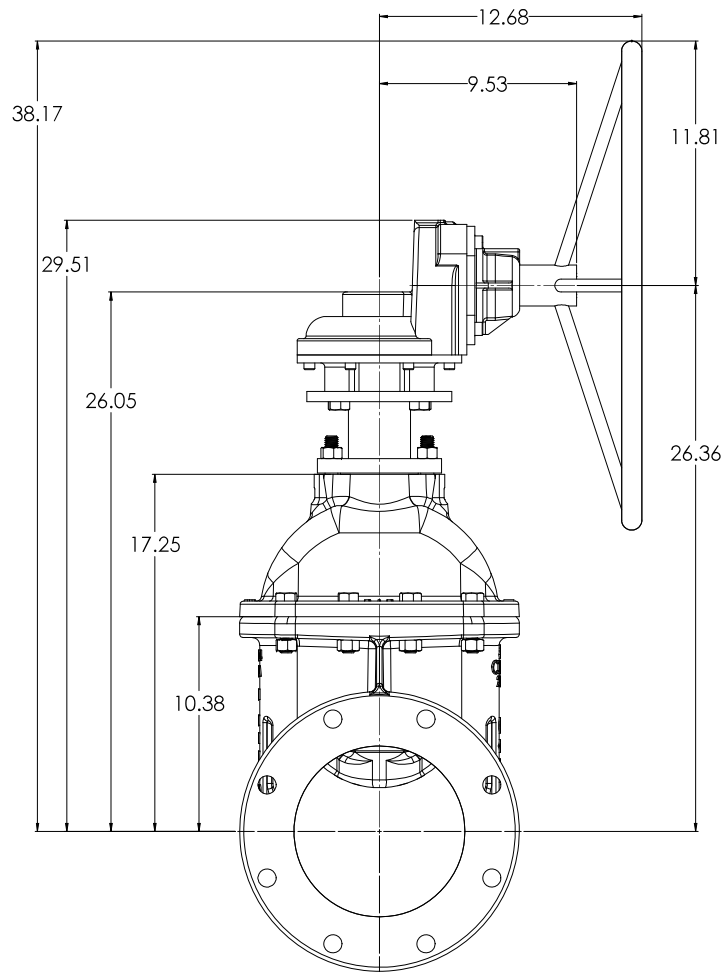
**08" C515 PVC X PVC**



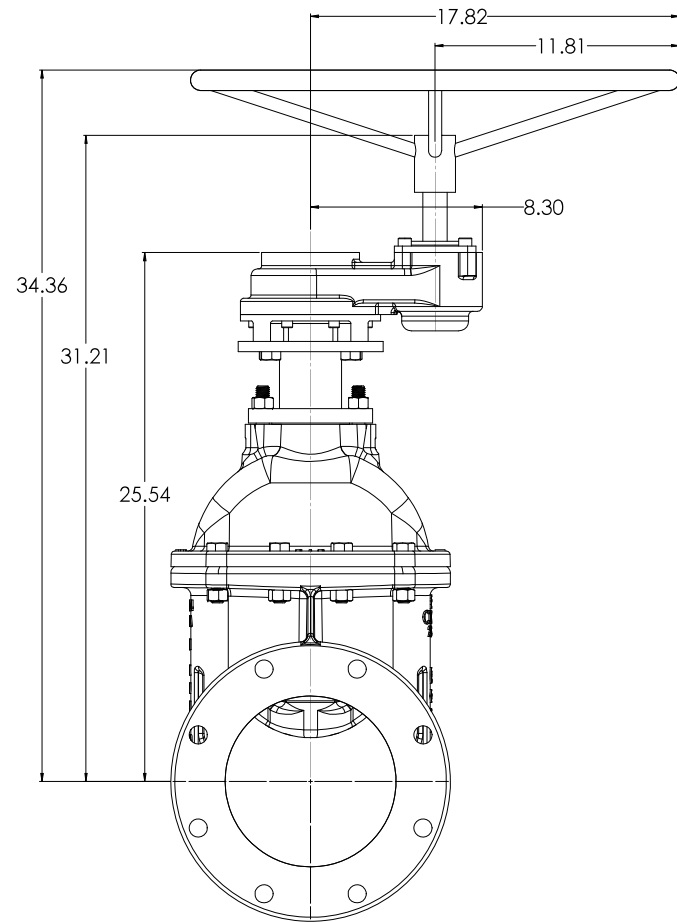
COMPANY: <b>ME</b> ADDRESS: <b>1100 W. 15th St., Tulsa, OK 74107</b> PHONE: <b>918-438-2200</b> FAX: <b>918-438-2201</b> E-MAIL: <b>me@mevalve.com</b>	DIVISION: <b>VALVE</b> PRODUCT: <b>WEDGE GATE VALVE</b> MATERIAL: <b>CAST IRON</b> FINISH: <b>AS MANUFACTURED</b>	PROJECT: <b>08" C515 NRS GEARED RESILIENT WEDGE GATE VALVE</b> LBS: <b>150</b> SCALE: <b>1:5</b> DATE: <b>12/29/2020</b>	SHEET: <b>2</b> TOTAL SHEETS: <b>8</b> DRAWN BY: <b>D</b>
--	--	---	---



### BEVEL GEAR WITH HANDWHEEL

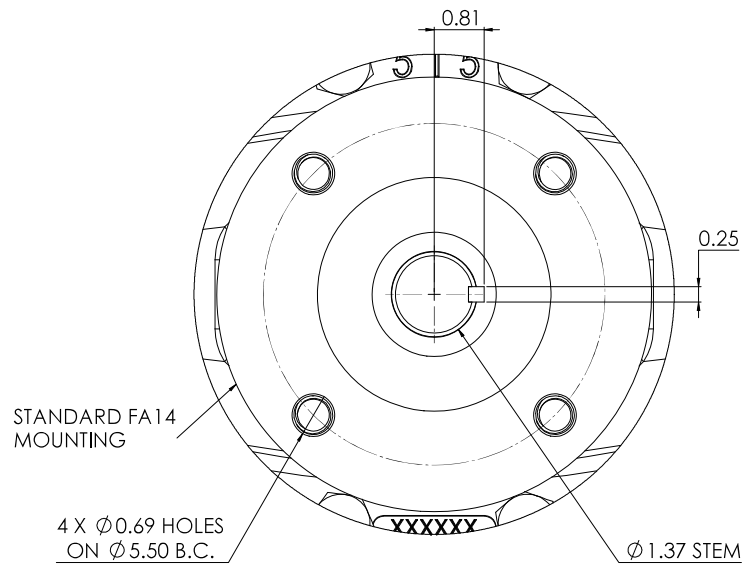
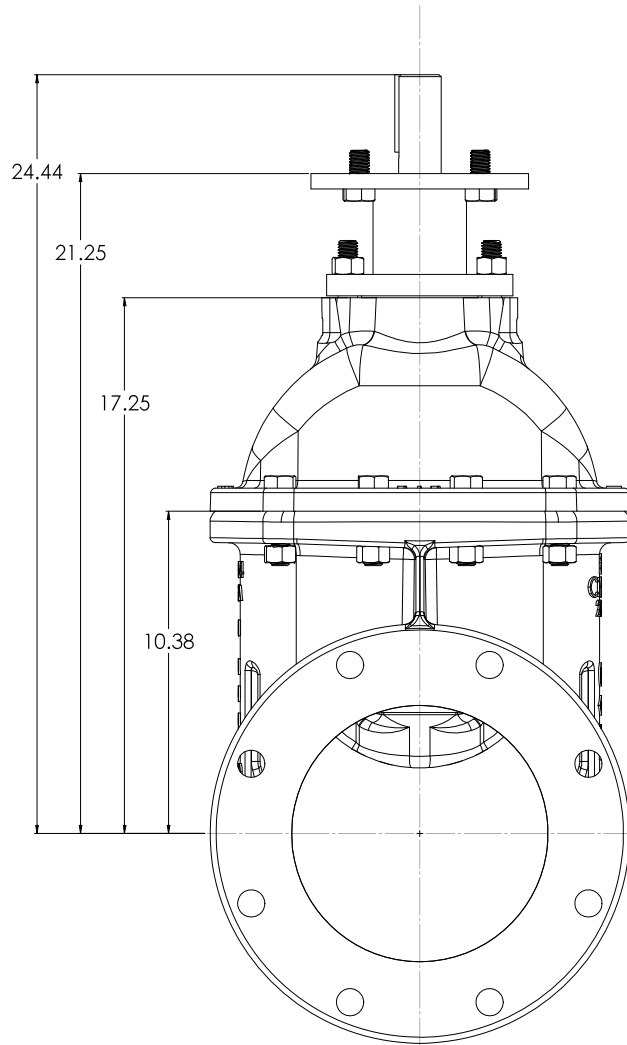


### SPUR GEAR WITH HANDWHEEL



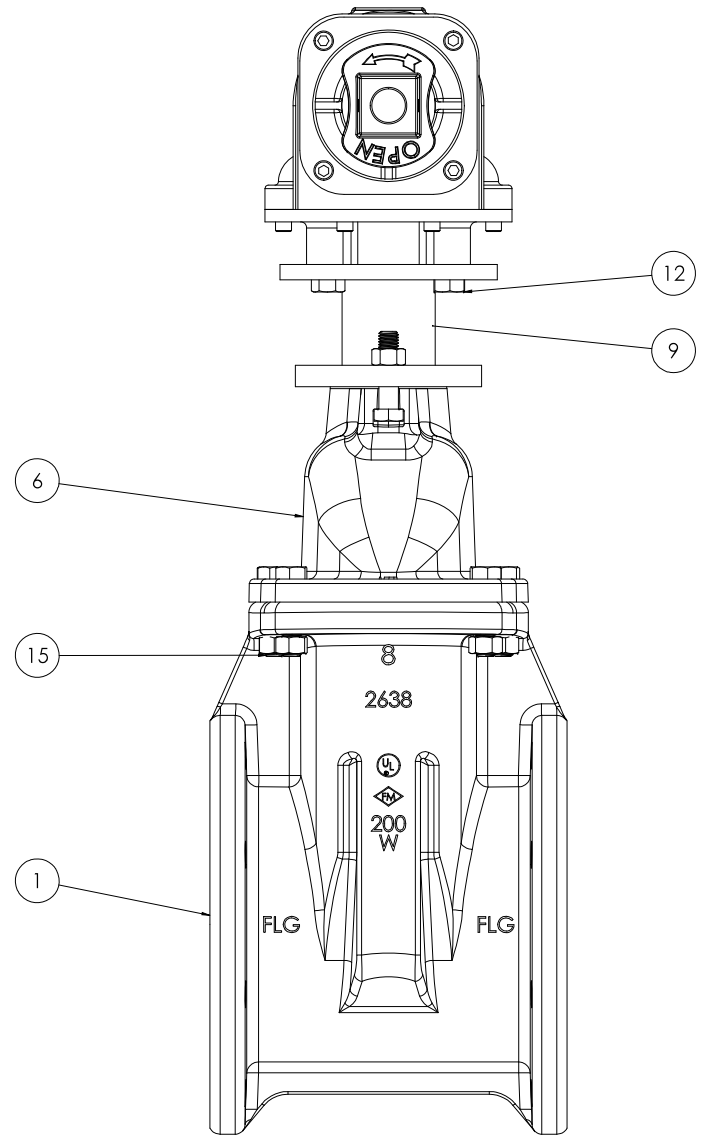
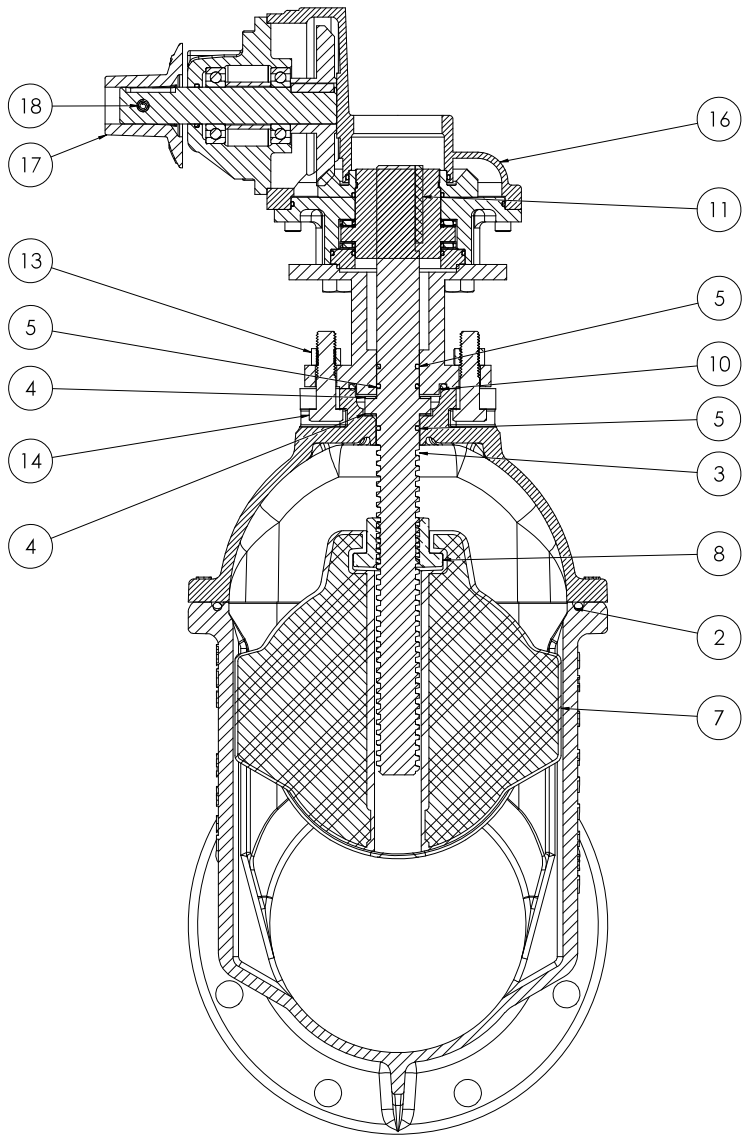
<b>WEDGEMASTER</b> 1222/2020		08" CS15 NRS GEARED RESILIENT WEDGE GATE VALVE		4 8	
DATE: 12/22/2020 BY: CW CHECKED: 12/22/2020 BY:	APPROVED: 12/22/2020 BY:	WEIGHT: LBS T:110	08" CS15 NRS GEARED RESILIENT WEDGE GATE VALVE	4 8	

# BARE STEM



BARE STEM MOUNTING FLG

<b>WEDGEMOUNT</b> <small>Wedge Mount Corporation</small>		<small>10000 WEDGEMOUNT DRIVE</small> <small>WEDGEMOUNT, OHIO 44095</small>		<small>PHONE: (440) 933-8800</small> <small>FAX: (440) 933-8801</small> <small>WWW.WEDGEMOUNT.COM</small>	
<small>DATE OF ORDER:</small> 11/20/18 <small>REV:</small> 4/20/17 <small>QTY:</small> 2/10/17 <small>DATE:</small> 2/20/17 <small>REVISED:</small> 4/18/17	<small>PRICE:</small> 25000 <small>UNIT PRICE:</small> 12500 <small>TOTAL:</small> 25000	<small>ORDER NO.:</small> 18000000000000000000 <small>QUANTITY:</small> 2 <small>UNIT PRICE:</small> 12500 <small>TOTAL:</small> 25000	<small>DATE:</small> 12/2/2020 <small>TIME:</small> 10:00 AM <small>USER:</small> CW	<small>DATE:</small> 12/2/2020 <small>TIME:</small> 10:00 AM <small>USER:</small> CW	<small>DATE:</small> 12/2/2020 <small>TIME:</small> 10:00 AM <small>USER:</small> CW
<small>08" CS15 NRS GEARED RESILIENT WEDGE GATE VALVE</small>			<small>LBS</small>		
<small>T:10</small>			<small>8</small>		



<b>WEDGEMASTER</b> 100% CS15 NRS GEARED RESILIENT WEDGE GATE VALVE		08" CS15 NRS GEARED RESILIENT WEDGE GATE VALVE		
DATE OF DESIGN: 11/11/10 DWG NO: 21047 REV: 1 DATE: 11/11/10 DESIGNED BY: JH CHECKED BY: JH	PART NO: 2638 MATERIAL: CS15 NRS WEIGHT: 138 LBS FINISH: 304	DRAWN BY: JH CHECKED BY: JH DATE: 11/11/10	SCALE: T:10 SHEET NO: 8 TOTAL SHEETS: 8	

ITEM NO.	COMPONENT	QTY.	SIZE	STANDARD MATERIAL	MATERIAL OPTIONS
1	BODY	1	-	DUCTILE IRON	-
2	O-RING	1	#447	EPDM	BUNA-N
3	STEM	1	-	C95400 (LOW ZINC)	-
4	THRUST WASHER	2	-	ACETAL	C26000
5	O-RING	3	#216	EPDM	BUNA-N
6	COVER	1	-	DUCTILE IRON	-
7	WEDGE	1	-	EPDM/DUCTILE IRON	-
8	STEM NUT	1	-	C87850	C99500 (LOW ZINC)
9	MOTOR MOUNT BRACKET	1	-	COLD ROLLED STEEL	-
10	O-RING	1	#335	EPDM	BUNA-N
11	STEM KEY	1	1/4" X 2 1/2"	18-8 SS	316 SS
12	HEX HEAD CAP SCREW	4	5/8"-11 X 1 1/4"	18-8 SS	316 SS
13	HEX NUT	10	5/8"-11	18-8 SS	316 SS
14	HEX HEAD CAP SCREW	2	5/8"-11 X 2 1/4"	18-8 SS	316 SS
15	HEX HEAD CAP SCREW	8	5/8"-11 X 2 1/2"	18-8 SS	316 SS
16	BEVEL GEAR	1	-	-	SPUR GEAR
17	OPERATING NUT	1	-	CAST IRON	DUCTILE IRON, C86700, **Ø 12" HANDWHEEL**
18	COILED SPRING PIN	1	10MM X 45MM	302/304 SS	-

- VALVES CONFORM WITH THE FOLLOWING STANDARDS
  - AWWA C515
  - NSF 61
- LOW ZINC BRASS STEM AND STEM NUT AVAILABLE
- 100% DOMESTIC FASTENERS AND ORINGS OPTIONS AVAILABLE
- *OPEN LEFT* (COUNTERCLOCKWISE) AND *OPEN RIGHT* (CLOCKWISE) OPTIONS AVAILABLE
- TURNS TO OPEN FROM FULLY CLOSED: 26
- AWWA MAXIMUM ALLOWABLE CLOSING TORQUE 150 FT-LBS INTO GEAR
- OPTIONAL HANDWHEEL CAN BE SUBSTITUTED FOR STANDARD 2" SQUARE OP. NUTS.
  - **\*\*NOTE: STANDARD HANDWHEEL SIZE LISTED OUT IN PARTS LIST.\*\***

<small>           COMPANY: <b>WEDGEMASTER</b>            ADDRESS: 1100 W. 10TH ST., SUITE 100            DENVER, CO 80202            PHONE: 303.733.1100            FAX: 303.733.1101            WWW.WEDGEMASTER.COM         </small>	<small>           PROJECT: <b>08" CS15 NRS GEARED RESILIENT WEDGE GATE VALVE</b>            LBS: <b>150</b>            DATE: <b>12/2/2020</b>            DRAWN BY: <b>TJT</b>            CHECKED BY: <b>TJT</b>            SCALE: <b>1:10</b>            SHEET NO: <b>8</b> OF <b>8</b> </small>	
---	--	---