

Valve extension stems are available in steel, or bronze and are provided with a 2" square nut or handwheel as specified.

Extension stems are available for use with Mud valves, Gate Valves, Butterfly Valves, etc.

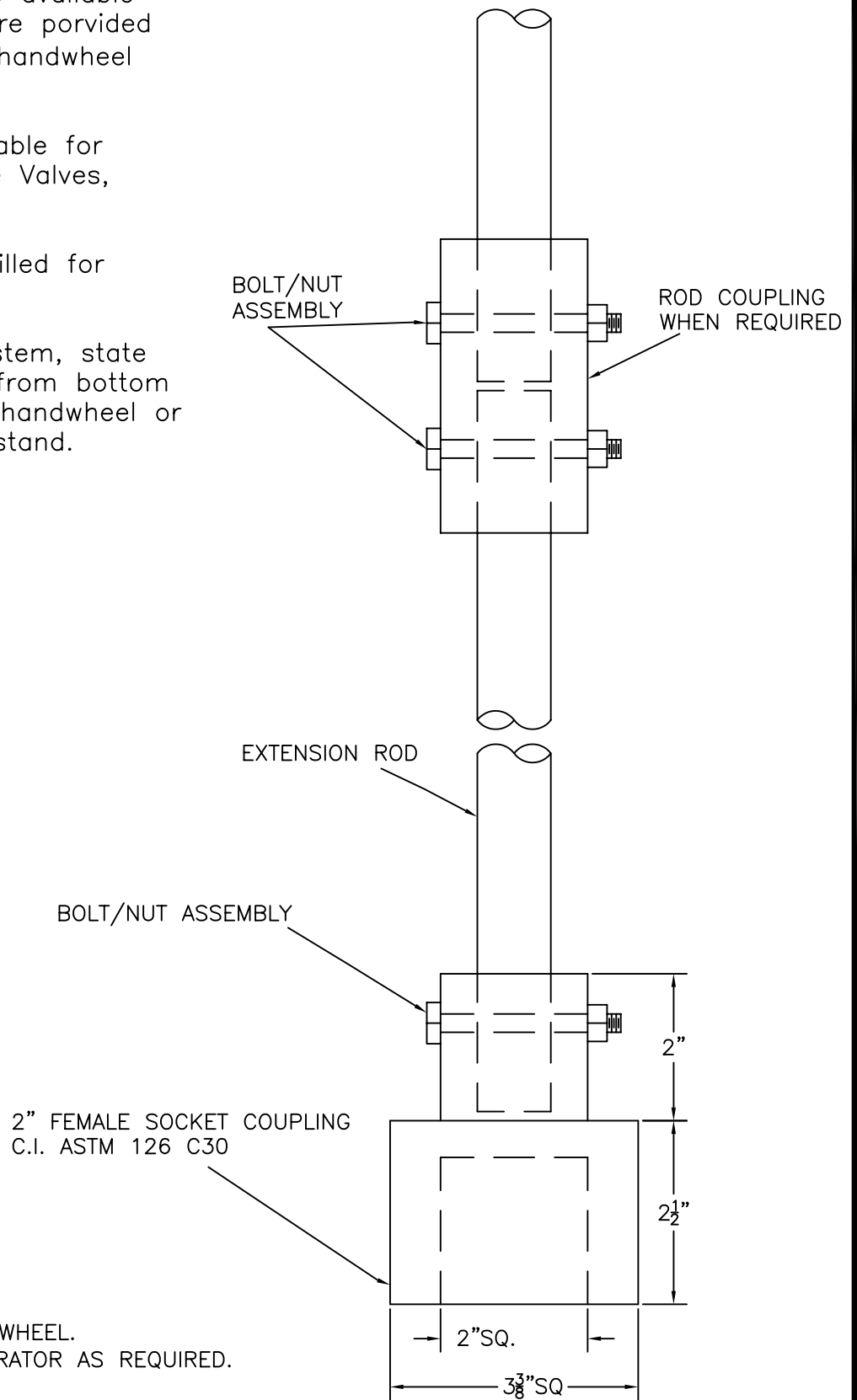
All components are jig drilled for interchangeability.

When ordering extension stem, state length and give distance from bottom face of flange to top of handwheel or nut, or to base of floor stand.

EXTENSION ROD
DIA.— _____

LENGTH— _____

QTY.— _____



TO BE SUPPLIED WITH A HANDWHEEL.
2" SQ. NUT, FLOORSTAND OPERATOR AS REQUIRED.

M&H VALVE COMPANY
ANNISTON, ALABAMA
A DIVISION OF MCWANE INC.

DWN: TRIJ
DATE: 7/1/05
DWG. NO.
ACESA

EXTENSION STEM ASSEMBLY
2" SQUARE SOCKET COUPLING
MATERIAL LIST / DIMENSIONS