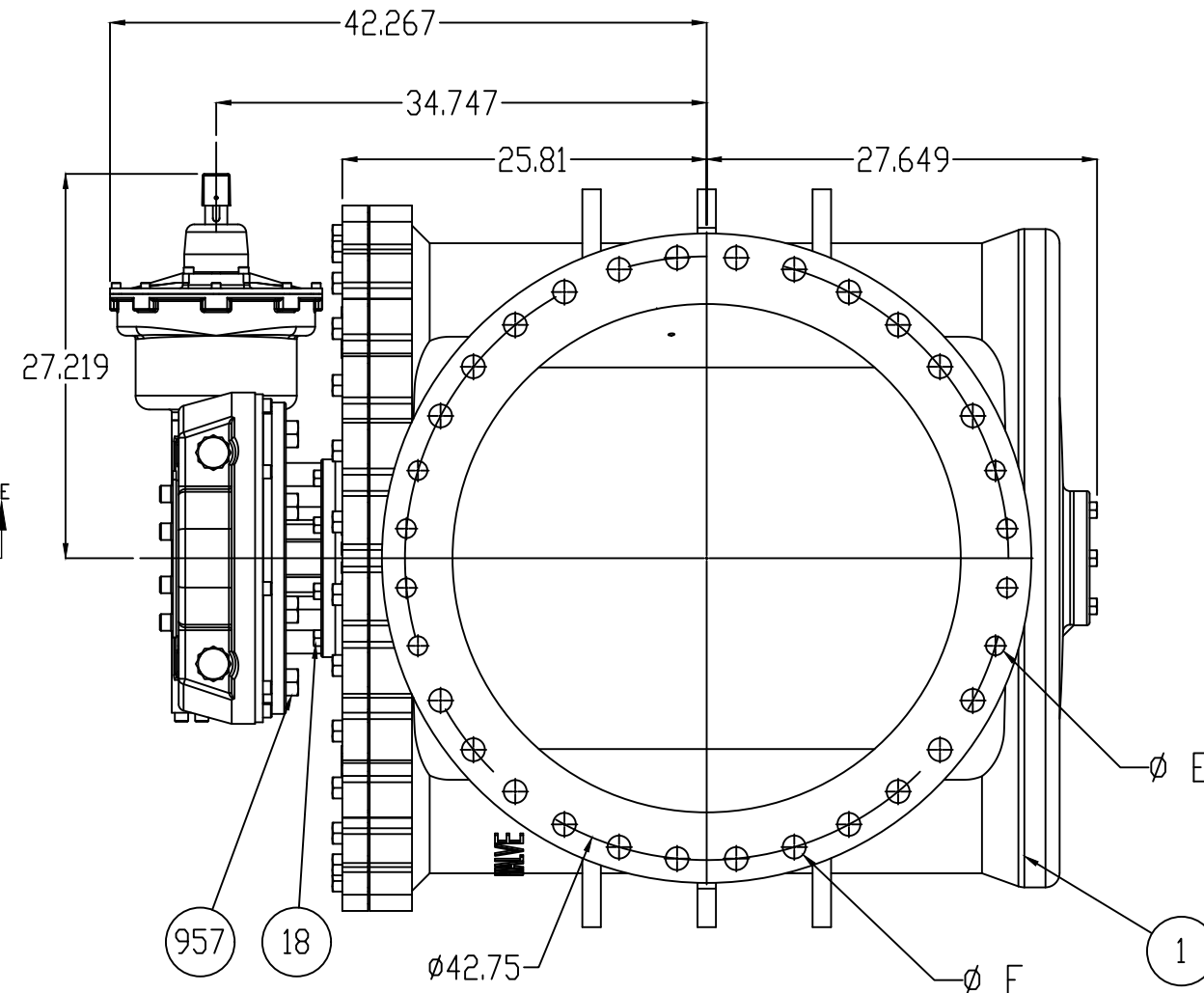
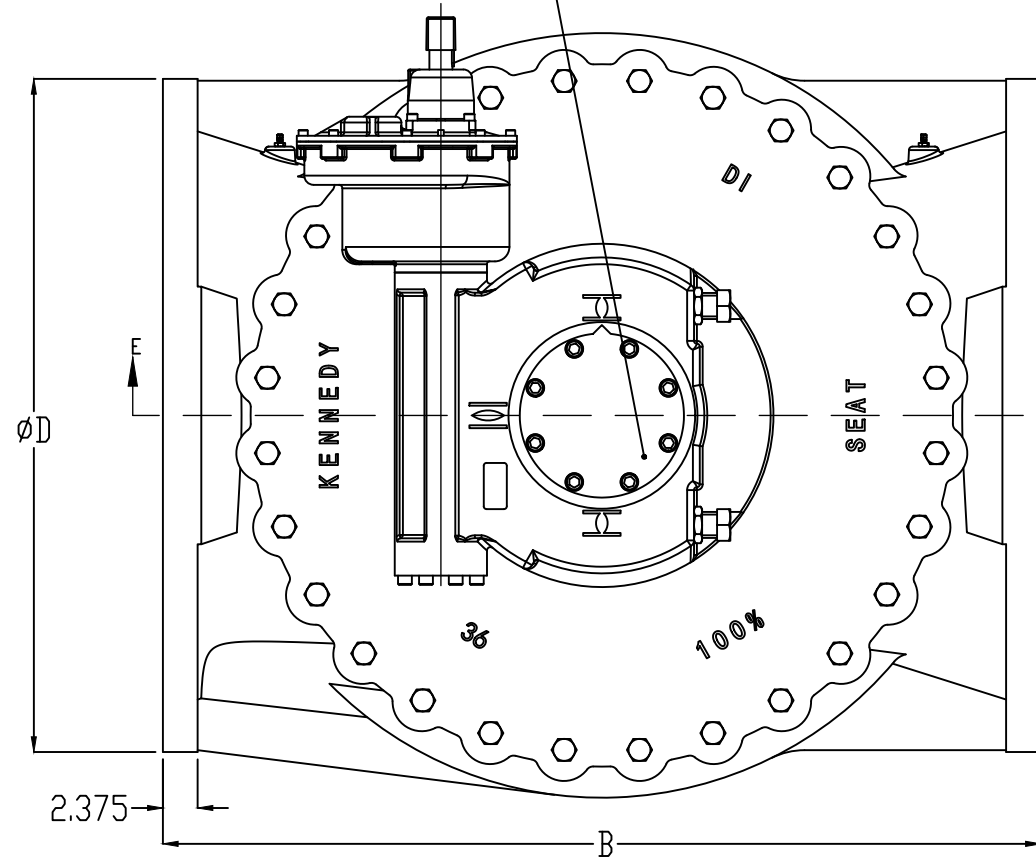
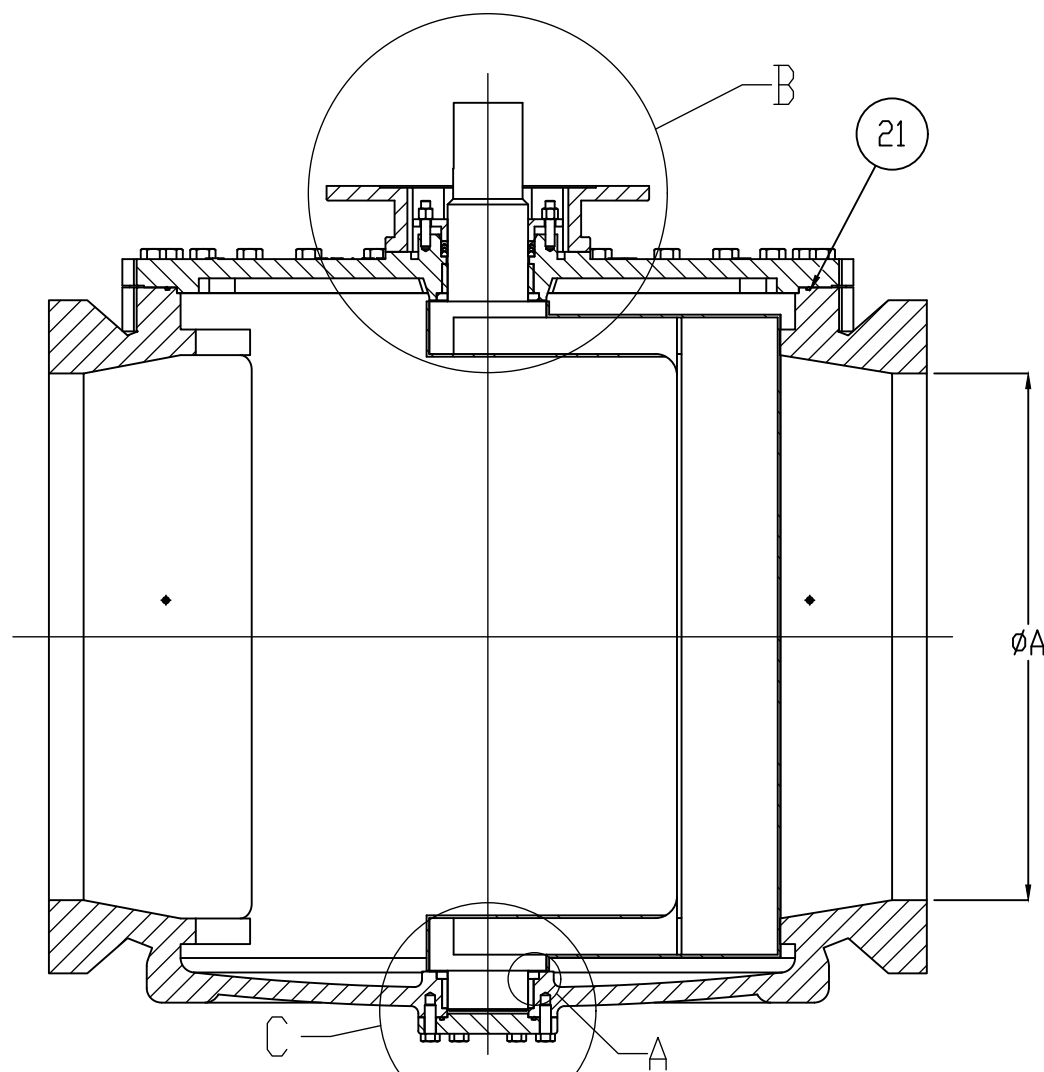


GEARBOX FOR BURIED SERVICE WILL NOT HAVE POSITION INDICATOR

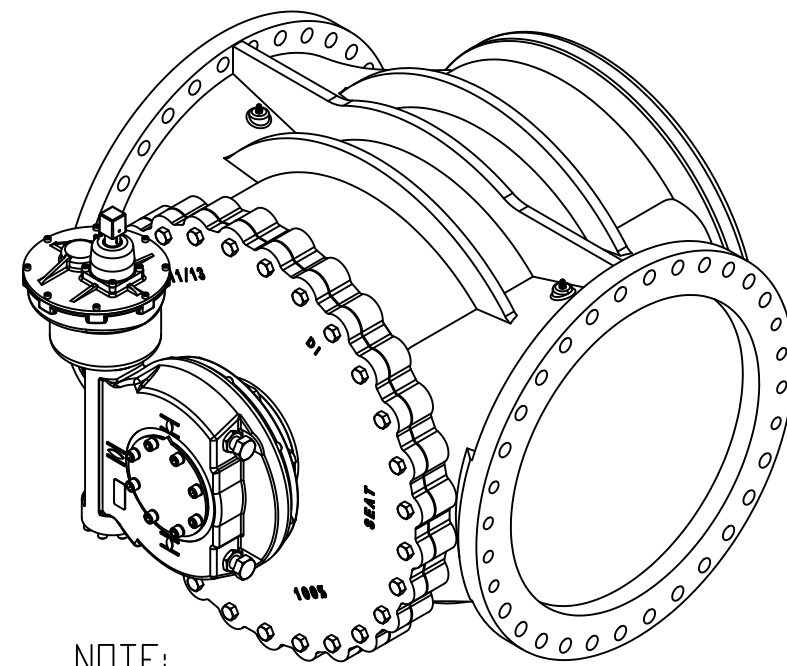


ITEM NO.	DESCRIPTION	MATERIAL
1	BODY - FLANGED	ASTM A536 GR. 65-45-12 DR 70-50-05
2	PLUG	ASTM A536 GR. 65-45-12 DR 70-50-05+NBR
3	COVER	ASTM A536 GR. 65-45-12 DR 70-50-05
4	BOTTOM THRUST WASHER	PTFE
5	BOTTOM BEARING	SINTERED ALLOY SS316
6	GRIT GUARD SHAFT SEAL (LOWER)	NBR
7	GRIT GUARD SHAFT SEAL (UPPER)	NBR
8	UPPER THRUST WASHER	PTFE
9	UPPER BEARING	SINTERED ALLOY SS316
10	V2-PACKING-AN6225-55	NBR
11	V2-TOP-PACKING-AN6225-55	NBR
12	V-BOTTOM-PACKING-AN6225-55	NBR
13	FP GLAND (FOR ACTUATOR)	ASTM A536 GR. 65-45-12 DR 70-50-05
14	BOTTOM COVER	ASTM A536 GR. 65-45-12 DR 70-50-05
15	COVER STUDS	STAINLESS STEEL ASTM A276.T316
16	HEXAGON COVER BOLTS	STAINLESS STEEL ASTM A276.T316
17	BOTTOM COVER BOLTS	STAINLESS STEEL ASTM A276.T316
18	HEXAGON ADAPTER BOLTS	STAINLESS STEEL ASTM A276.T316
19	HEX NUT	STAINLESS STEEL ASTM A276.T316
20	O-RING - BOTTOM COVER	NBR
21	O-RING - TOP COVER	NBR
22	FP ADAPTER - CLOSE	ASTM A536 GR. 65-45-12 DR 70-50-05
957	GEAR BOLTS	STAINLESS STEEL ASTM A276.T316

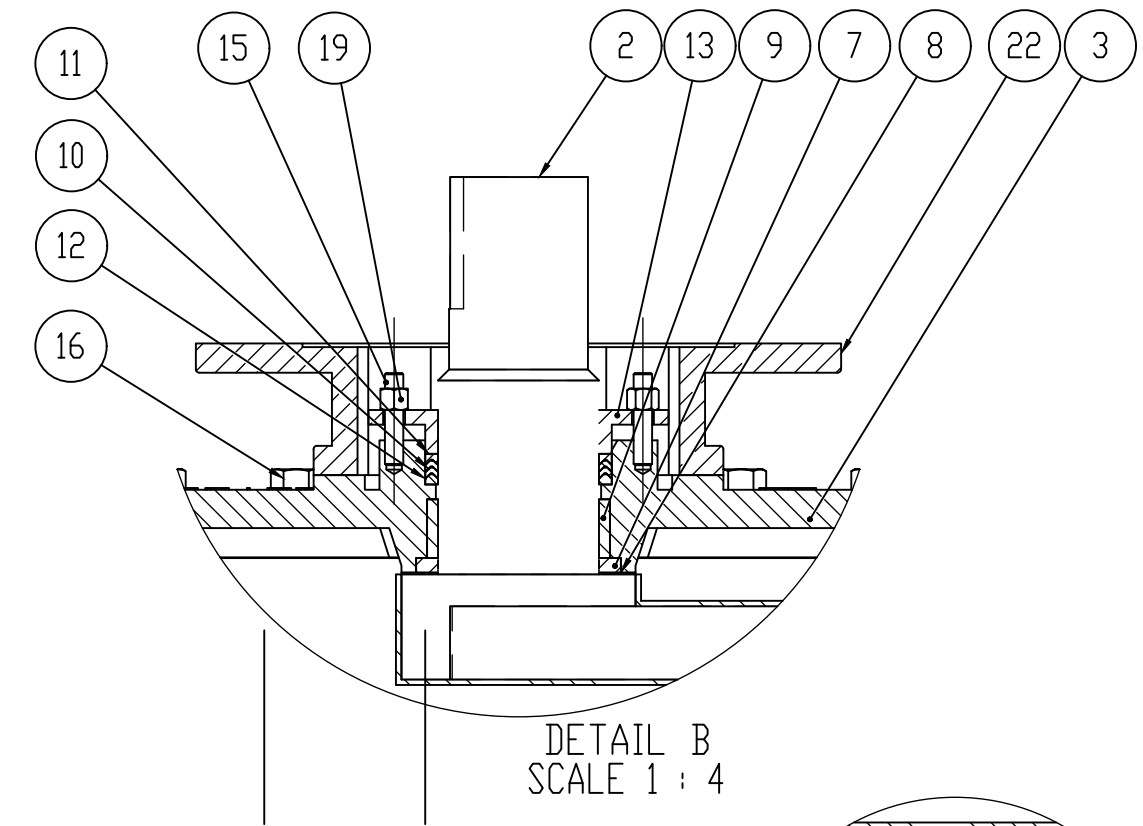
- NOTE:
- Interior and exterior ferrous metal surfaces are epoxy-coated.
 - Only 30" and 36" valves have a bottom cover plate (see pentagon ballon items).
 - Mount in orientation shown for buried service.
 - Gearbox for buried service will not have position indicator.
 - Body castings are tri-marked with "Clow," "Kennedy," and "M&H".



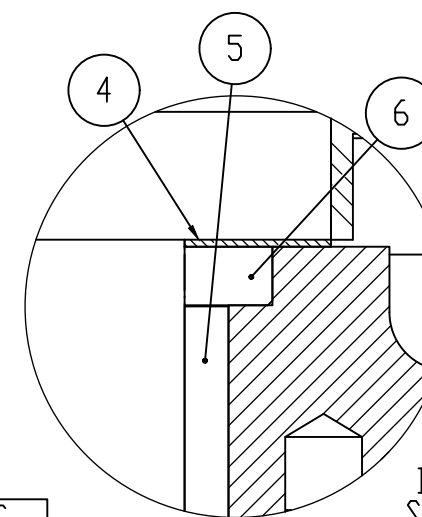
RECOMMENDED ORIENTATION FOR BURIED SERVICE:



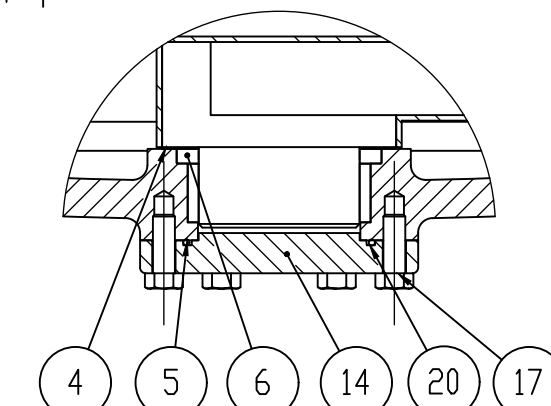
NOTE:
 ° 36" VALVE SHOWN
 ° SHOWN OPEN WITH PLUG UP



DETAIL B
SCALE 1 : 4



DETAIL A
SCALE 1 : 1



DETAIL C
SCALE 1 : 4

A [VALVE SIZE]	B	C	D	E	F	G	H	I	J	K	L	WEIGHT [LBS]	ROTORK GEAR	GEAR RATIO	TURNS TO OPEN (APPROX)	RATED PRESSURE	HYDROSTATIC TEST PRESSURE
18	21.50	1.58	Ø 25.00	8 x 1.13-7 UNS-2B ▽1.50	8 x Ø 1.25 THRU	Ø 22.75	16.42	22.7	27.6	15.5	18.3	1262	IW6 AWWA-IP68	152:1	38	150 PSI	300 PSI
20	23.50	1.69	Ø 27.50	8 x 1.13-7 UNS-2B ▽1.25	12 x Ø 1.25 THRU	Ø 25.00	17.09	23.7	28.6	15.5	17.4	1537	IW6 AWWA-IP68	228:1	57		
24	42.00	1.88	Ø 32.00	8 x 1.25-7 UNS-2B ▽2.00	12 x Ø 1.38 THRU	Ø 29.20	21.06	27.4	35.4	21.6	21.8	3421	IW7 AWWA-IP68	384:1	96		
30	51.00	2.13	Ø 38.75	8 x 1.25-7 UNS-2B ▽2.63	20 x Ø 1.38	Ø 36.00	22.19	30.3	37.2	27.2	22.5	6135	IW9 AWWA-IP68	696:1	174		
36	60.00	2.38	Ø 46.00	8 x 1.50-6 UNS-2B ▽3.50	36 x Ø 1.63 THRU	Ø 42.75	25.81	34.7	42.27	27.2	27.7	8515	IW9 AWWA-IP68	928:1	232		

REV.	DESCRIPTION	APPROVED	DATE
1	RELEASED	ML	11/13/15
2	CHANGE DETAIL A VIEW SIZE. REMOVE OPTION TEXT FROM NOTES	ML	11/24/2015
3	EDITED GEAR INFORMATION	J CAPPER	7/24/2018
4	MAKE FASTENERS 316 SS STANDARD. REMOVED 14"-16" SIZES. REMOVED 14" ADDED DIM JKLL. EDITED NOTES. UPDATED GEAR INFORMATION.	DPB, J CAPPER	2/19/19
5	FIXED ORIENTATIONS. ADDED J, K, L. REMOVED SIZES 14 & 16. UPDATED NOTE	CAV	3/20/2019
6	ADDED TRI-MARKING NOTE	J CAPPER	4/8/2019

NAME	DATE	APPROVED	TITLE
ML	11/13/2015	[Signature]	18"-36" "FULL FLOW" FLG EPV (6412-FF)
ML	11/13/2015	[Signature]	w/ ROTORK GEAR for Bury Service
APPROVED			DO NOT SCALE DRAWING
MATERIAL			SEE TABLE
WEIGHT			SEE TABLE
SIZE			DWG. NO. SUB910257T
REV			6